

Exhibit C

88 Broadway Schedule

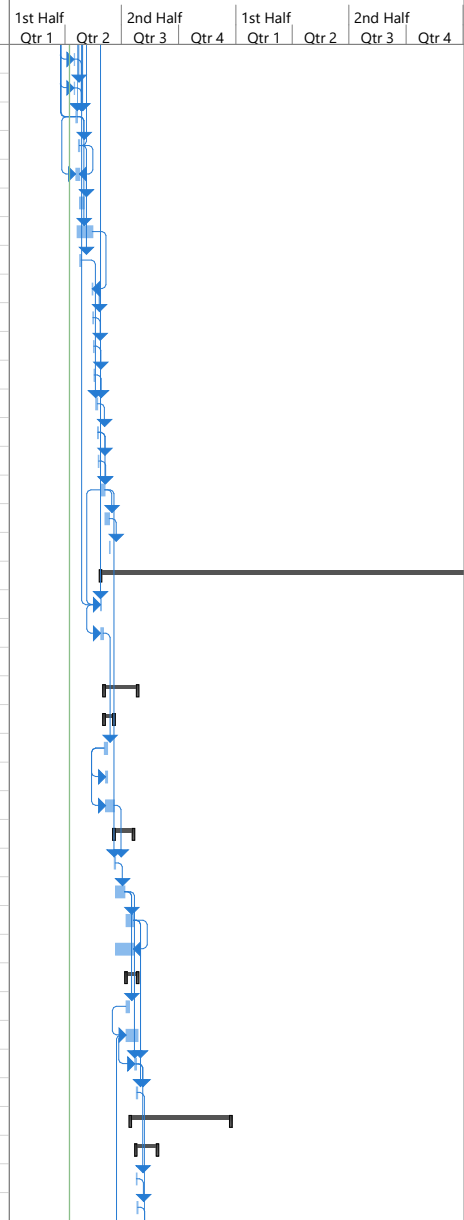
ID	Task Mode	Task Name	Duration	Start	Finish	1st Half		2nd Half		1st Half		2nd Half	
						Qtr 1	Qtr 2	Qtr 3	Qtr 4	Qtr 1	Qtr 2	Qtr 3	Qtr 4
1		Permitting	100 days	Wed 12/12/18	Mon 5/6/19								
2		Addendum 1 (Demo & Grading)	85 days	Wed 12/12/18	Mon 4/15/19								
3		Addendum 2 (Foundation & Podium)	85 days	Wed 12/12/18	Mon 4/15/19								
4		Addendum 3 (Wood Superstructure)	63 days	Wed 2/6/19	Mon 5/6/19								
5		Test Pile Permit	1 day	Mon 4/8/19	Mon 4/8/19								
6		GMP Pricing, Contracts	71 days	Tue 1/22/19	Wed 5/1/19								
7	✓	100% CD Set	1 day	Tue 1/22/19	Tue 1/22/19								
8	✓	GMP Bids (30 calendar days)	22 days	Wed 1/23/19	Fri 2/22/19								
9	✓	Level Bids	10 days	Mon 2/25/19	Fri 3/8/19								
10	✓	VE	10 days	Mon 3/11/19	Fri 3/22/19								
11		Owner Contract	8 days	Mon 3/25/19	Wed 4/3/19								
12		Lender Review	21 days	Wed 4/3/19	Wed 5/1/19								
13		Early Work	76 days	Mon 2/25/19	Tue 6/11/19								
14		Pre-Construction Action Items	41 days	Fri 3/29/19	Fri 5/24/19								
15		Erect Perimeter Fencing	2 days	Fri 3/29/19	Mon 4/1/19								
16		Pull Port Fence Permit	1 day	Fri 3/29/19	Fri 3/29/19								
17		Erect Fencing	1 day	Mon 4/1/19	Mon 4/1/19								
18		Finalize Vibration and Monitoring Plan for Neighbors	1 day	Fri 4/5/19	Fri 4/5/19								
19		Execute Contract for Vibration/ Noise Monitoring/ Interior Survey	1 day	Mon 4/8/19	Mon 4/8/19								
20		License Agreements	2 days	Mon 4/8/19	Tue 4/9/19								
21		753 Davis (Red Building)	2 days	Mon 4/8/19	Tue 4/9/19								
22		Execute License Agreement	1 day	Mon 4/8/19	Mon 4/8/19								
23		Photo Survey (Prior to Test Piles)	1 day	Tue 4/9/19	Tue 4/9/19								
24		Survey for Building Settlement (Prior to Test Piles) - Set Targets	1 day	Tue 4/9/19	Tue 4/9/19								
25		Vibration Monitors	1 day	Tue 4/9/19	Tue 4/9/19								
26		60 Broadway (White Building)	2 days	Mon 4/8/19	Tue 4/9/19								
27		Execute License Agreement	1 day	Mon 4/8/19	Mon 4/8/19								
28		Photo Survey (Prior to Test Piles)	1 day	Tue 4/9/19	Tue 4/9/19								
29		Survey for Building Settlement (Prior to Test Piles) - Set Targets	1 day	Tue 4/9/19	Tue 4/9/19								
30		Vibration Monitors	1 day	Tue 4/9/19	Tue 4/9/19								
31		Retain Special Inspector (Prior to Test Pile Install)	1 day	Wed 4/17/19	Wed 4/17/19								
32		Retain Pile Spoils Testing Agent (Sign up RPS)	1 day	Tue 4/16/19	Tue 4/16/19								
33		Archeological Test Pits (Follows Install of Test Piles)	5 days	Mon 4/29/19	Fri 5/3/19								
34		Submit Port SWPPP (Prior to NTP ?)	5 days	Mon 5/20/19	Fri 5/24/19								
35		Owner/ Cahill Set Survey Control	1 day	Thu 4/11/19	Thu 4/11/19								
36		ACP Test Pile Program	76 days	Mon 2/25/19	Tue 6/11/19								
37	✓	Owner Authorization for Test Piles	14 days	Mon 2/25/19	Thu 3/14/19								
38		Subcontract Design/Generate Test Pile Submittal	11 days	Fri 3/15/19	Fri 3/29/19								
39		Engineer Review and Approve Test Pile Submittal	5 days	Mon 4/1/19	Fri 4/5/19								
40		Procure Test Pile Material	5 days	Mon 4/8/19	Fri 4/12/19								
41		Mobilize	3 days	Mon 4/15/19	Wed 4/17/19								

Project: 88 Broadway GMP Sche
Date: Mon 4/8/19

Task	Project Summary	Manual Task	Start-only	Deadline
Split	Inactive Task	Duration-only	Finish-only	Progress
Milestone	Inactive Milestone	Manual Summary Rollup	External Tasks	Manual Progress
Summary	Inactive Summary	Manual Summary	External Milestone	

88 Broadway Schedule

ID	Task Mode	Task Name	Duration	Start	Finish	1st Half		2nd Half		1st Half		2nd Half	
						Qtr 1	Qtr 2	Qtr 3	Qtr 4	Qtr 1	Qtr 2	Qtr 3	Qtr 4
42		Set up Temp Water	1 day	Mon 4/15/19	Mon 4/15/19								
43		Survey/ Layout Load Test and Indicator Pile	1 day	Mon 4/15/19	Mon 4/15/19								
44		Install Load Test / Reaction Piles	2 days	Thu 4/18/19	Fri 4/19/19								
45		Install Indicator Piles	2 days	Mon 4/22/19	Tue 4/23/19								
46		Pile Spoil Sampling for Load Test and Indicator Piles (RPS)	4 days	Thu 4/18/19	Tue 4/23/19								
47		Pile Spoil Testing/ Receive Results- Determine Classification	5 days	Wed 4/24/19	Tue 4/30/19								
48		Cure Time (25 calendar days)	25 edays	Fri 4/19/19	Tue 5/14/19								
49		Prep PDA Piles	3 days	Wed 4/24/19	Fri 4/26/19								
50		Set-Up COMP Load Test Frame	1 day	Tue 5/14/19	Tue 5/14/19								
51		Perform COMP Load Test	1 day	Wed 5/15/19	Wed 5/15/19								
52		Set-Up TENSION Load Test Frame	1 day	Thu 5/16/19	Thu 5/16/19								
53		Perform TENSION Load Test	1 day	Fri 5/17/19	Fri 5/17/19								
54		PDA Load Test & Indicator Piles	3 days	Mon 5/20/19	Wed 5/22/19								
55		Submit Load Test Report	1 day	Thu 5/23/19	Thu 5/23/19								
56		Submit PDA Report	1 day	Fri 5/24/19	Fri 5/24/19								
57		Review and Approve Test Program	5 days	Tue 5/28/19	Mon 6/3/19								
58		Material Fabrication	5 days	Tue 6/4/19	Mon 6/10/19								
59		Ready to Start Production Piles	1 day	Tue 6/11/19	Tue 6/11/19								
60		Construction	436 days	Tue 5/28/19	Wed 2/17/21								
61		Notice to Proceed	1 day	Tue 5/28/19	Tue 5/28/19								
62		Mobilization Equipment/Erect Fencing/Set up Trailer	4 days	Tue 5/28/19	Fri 5/31/19								
63													
64		Site Demo/Earthwork/Piles/Subgrade Improvements	39 days	Mon 6/3/19	Fri 7/26/19								
65		Site Demo	12 days	Mon 6/3/19	Tue 6/18/19								
66		Survey / Control / Layout	5 days	Mon 6/3/19	Fri 6/7/19								
67		Safe-off Utilities	3 days	Wed 6/5/19	Fri 6/7/19								
68		Demo Onsite Concrete/AC to Bottom of Slab	10 days	Wed 6/5/19	Tue 6/18/19								
69		Auger Cast Piles	22 days	Wed 6/19/19	Fri 7/19/19								
70		Mobilize	2 days	Wed 6/19/19	Thu 6/20/19								
71		Install Piles (1st Half - 64 Piles @ 10/day)	10 days	Fri 6/21/19	Fri 7/5/19								
72		Install Piles (2nd Half - 68 Piles @ 10/day)	10 days	Mon 7/8/19	Fri 7/19/19								
73		Stock Pile ACP Spoils for Waste Characterization	20 days	Fri 6/21/19	Fri 7/19/19								
74		Shoring / Earthwork	15 days	Mon 7/8/19	Fri 7/26/19								
75		Localized Shoring @ Perimeter of Site (after 1st half piles)	5 days	Mon 7/8/19	Fri 7/12/19								
76		Rough Grade Site	15 days	Mon 7/8/19	Fri 7/26/19								
77		Excavate Tower Crane Foundation	2 days	Mon 7/22/19	Tue 7/23/19								
78		Excavate Elevator Pit	2 days	Wed 7/24/19	Thu 7/25/19								
79		Structure - Concrete	113 days	Mon 7/15/19	Mon 12/23/19								
80		Tower Crane Foundation	25 days	Wed 7/24/19	Tue 8/27/19								
81		Fine Grade	1 day	Wed 7/24/19	Wed 7/24/19								
82		Edge Form	2 days	Thu 7/25/19	Fri 7/26/19								



Project: 88 Broadway GMP Sche
Date: Mon 4/8/19

Task		Project Summary		Manual Task		Start-only		Deadline	
Split		Inactive Task		Duration-only		Finish-only		Progress	
Milestone		Inactive Milestone		Manual Summary Rollup		External Tasks		Manual Progress	
Summary		Inactive Summary		Manual Summary		External Milestone			

88 Broadway Schedule

ID	Task Mode	Task Name	Duration	Start	Finish	1st Half		2nd Half		1st Half		2nd Half	
						Qtr 1	Qtr 2	Qtr 3	Qtr 4	Qtr 1	Qtr 2	Qtr 3	Qtr 4
83		Bottom Mat Rebar	2 days	Mon 7/29/19	Tue 7/30/19								
84		Install Tower Crane Stools/Dowels/Embeds	2 days	Wed 7/31/19	Thu 8/1/19								
85		Top Mat	2 days	Fri 8/2/19	Mon 8/5/19								
86		MEPS Sleeves/Conduit	1 day	Tue 8/6/19	Tue 8/6/19								
87		Inspect	1 day	Wed 8/7/19	Wed 8/7/19								
88		Pour Tower Crane Foundation	1 day	Thu 8/8/19	Thu 8/8/19								
89		Cure (5 calendar days)	5 edays	Thu 8/8/19	Tue 8/13/19								
90		Strip Foundation	2 days	Mon 8/12/19	Tue 8/13/19								
91		Erect Tower Crane	5 days	Wed 8/14/19	Tue 8/20/19								
92		Testing/Inspection	5 days	Wed 8/21/19	Tue 8/27/19								
93		Elevator Pit	23 days	Fri 7/26/19	Tue 8/27/19								
94		Fine Grade	1 day	Fri 7/26/19	Fri 7/26/19								
95		Sheet Waterproofing Horizontal	1 day	Mon 7/29/19	Mon 7/29/19								
96		Edge Form	1 day	Tue 7/30/19	Tue 7/30/19								
97		Slab Rebar	1 day	Wed 7/31/19	Wed 7/31/19								
98		Inspect	1 day	Thu 8/1/19	Thu 8/1/19								
99		Pour Elevator Pit Slab	1 day	Fri 8/2/19	Fri 8/2/19								
100		Form Walls	2 days	Mon 8/5/19	Tue 8/6/19								
101		Wall Rebar	2 days	Wed 8/7/19	Thu 8/8/19								
102		Inspect	1 day	Fri 8/9/19	Fri 8/9/19								
103		Double-up Walls	2 days	Mon 8/12/19	Tue 8/13/19								
104		Pour Elevator Pit Walls	1 day	Wed 8/14/19	Wed 8/14/19								
105		Strip Walls	2 days	Thu 8/15/19	Fri 8/16/19								
106		Cure (7 calendar days)	5 edays	Fri 8/16/19	Wed 8/21/19								
107		Waterproof Walls	2 days	Thu 8/22/19	Fri 8/23/19								
108		Backfill Elevator Pit	2 days	Mon 8/26/19	Tue 8/27/19								
109		Grade Beams	47 days	Mon 7/15/19	Wed 9/18/19								
110		GB Pour 1	20 days	Mon 7/15/19	Fri 8/9/19								
111		Excavate Grade Beams	5 days	Mon 7/15/19	Fri 7/19/19								
112		Trim Pile Caps	5 days	Thu 7/18/19	Wed 7/24/19								
113		Stay Form	5 days	Tue 7/23/19	Mon 7/29/19								
114		Rebar Cages	4 days	Fri 7/26/19	Wed 7/31/19								
115		MEPS Sleeves	2 days	Wed 7/31/19	Thu 8/1/19								
116		Inspect	1 day	Fri 8/2/19	Fri 8/2/19								
117		Pour	1 day	Mon 8/5/19	Mon 8/5/19								
118		Strip Stay Form Stakes	2 days	Tue 8/6/19	Wed 8/7/19								
119		Back Fill/Pour Lean Mix ??	2 days	Thu 8/8/19	Fri 8/9/19								
120		GB Pour 2	20 days	Mon 7/22/19	Fri 8/16/19								
121		Excavate Grade Beams	5 days	Mon 7/22/19	Fri 7/26/19								
122		Trim Pile Caps	5 days	Thu 7/25/19	Wed 7/31/19								
123		Stay Form	5 days	Tue 7/30/19	Mon 8/5/19								

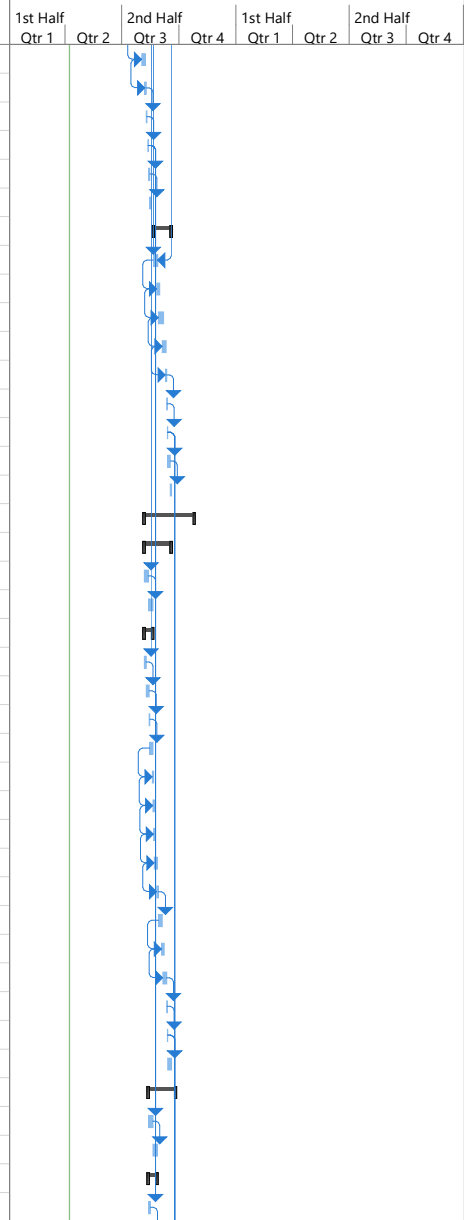


Project: 88 Broadway GMP Sche
Date: Mon 4/8/19

Task		Project Summary		Manual Task		Start-only		Deadline	
Split		Inactive Task		Duration-only		Finish-only		Progress	
Milestone		Inactive Milestone		Manual Summary Rollup		External Tasks		Manual Progress	
Summary		Inactive Summary		Manual Summary		External Milestone			

88 Broadway Schedule

ID	Task Mode	Task Name	Duration	Start	Finish	1st Half		2nd Half		1st Half		2nd Half	
						Qtr 1	Qtr 2	Qtr 3	Qtr 4	Qtr 1	Qtr 2	Qtr 3	Qtr 4
124		Rebar Cages	4 days	Fri 8/2/19	Wed 8/7/19								
125		MEPS Sleeves	2 days	Wed 8/7/19	Thu 8/8/19								
126		Inspect	1 day	Fri 8/9/19	Fri 8/9/19								
127		Pour	1 day	Mon 8/12/19	Mon 8/12/19								
128		Strip Stay Form Stakes	2 days	Tue 8/13/19	Wed 8/14/19								
129		Back Fill/Pour Lean Mix ??	2 days	Thu 8/15/19	Fri 8/16/19								
130		GB Pour 3	20 days	Wed 8/21/19	Wed 9/18/19								
131		Excavate Grade Beams	5 days	Wed 8/21/19	Tue 8/27/19								
132		Trim Pile Caps	5 days	Mon 8/26/19	Fri 8/30/19								
133		Stay Form	5 days	Thu 8/29/19	Thu 9/5/19								
134		Rebar Cages	4 days	Wed 9/4/19	Mon 9/9/19								
135		MEPS Sleeves	2 days	Mon 9/9/19	Tue 9/10/19								
136		Inspect	1 day	Wed 9/11/19	Wed 9/11/19								
137		Pour	1 day	Thu 9/12/19	Thu 9/12/19								
138		Strip Stay Form Stakes	2 days	Fri 9/13/19	Mon 9/16/19								
139		Back Fill/Pour Lean Mix ??	2 days	Tue 9/17/19	Wed 9/18/19								
140		Slab-on-Grade	58 days	Tue 8/6/19	Fri 10/25/19								
141		SOG Pour 1	31 days	Tue 8/6/19	Wed 9/18/19								
142		Perimeter Form	5 days	Tue 8/6/19	Mon 8/12/19								
143		Shut-Offs	5 days	Tue 8/13/19	Mon 8/19/19								
144		Sub Slab MEPS	10 days	Tue 8/6/19	Mon 8/19/19								
145		Excavate	3 days	Tue 8/6/19	Thu 8/8/19								
146		Install MEPS	3 days	Fri 8/9/19	Tue 8/13/19								
147		Inspect	1 day	Wed 8/14/19	Wed 8/14/19								
148		Back Fill	3 days	Thu 8/15/19	Mon 8/19/19								
149		Fine Grade	2 days	Mon 8/19/19	Tue 8/20/19								
150		Capillary Break	2 days	Tue 8/20/19	Wed 8/21/19								
151		Stego	2 days	Wed 8/21/19	Thu 8/22/19								
152		Bottom Mat Rebar	3 days	Thu 8/22/19	Mon 8/26/19								
153		In-Slab MEPS	3 days	Mon 8/26/19	Wed 8/28/19								
154		Top Mat Rebar	3 days	Thu 8/29/19	Tue 9/3/19								
155		Hung Forms	4 days	Tue 9/3/19	Fri 9/6/19								
156		Rebar Templates/Dowels/Embeds	4 days	Thu 9/5/19	Tue 9/10/19								
157		Inspect	1 day	Wed 9/11/19	Wed 9/11/19								
158		Pour	1 day	Thu 9/12/19	Thu 9/12/19								
159		Strip	4 days	Fri 9/13/19	Wed 9/18/19								
160		SOG Pour 2	31 days	Tue 8/13/19	Wed 9/25/19								
161		Perimeter Form	5 days	Tue 8/13/19	Mon 8/19/19								
162		Shut-Offs	5 days	Tue 8/20/19	Mon 8/26/19								
163		Sub Slab MEPS	10 days	Tue 8/13/19	Mon 8/26/19								
164		Excavate	3 days	Tue 8/13/19	Thu 8/15/19								



Project: 88 Broadway GMP Sche
Date: Mon 4/8/19

Task		Project Summary		Manual Task		Start-only		Deadline	
Split		Inactive Task		Duration-only		Finish-only		Progress	
Milestone		Inactive Milestone		Manual Summary Rollup		External Tasks		Manual Progress	
Summary		Inactive Summary		Manual Summary		External Milestone			

88 Broadway Schedule

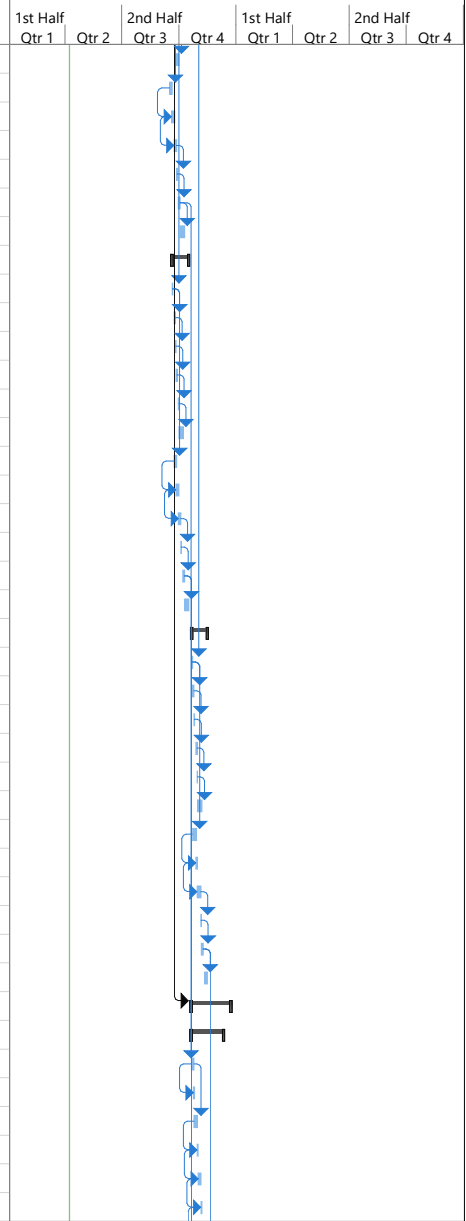
ID	Task Mode	Task Name	Duration	Start	Finish	1st Half		2nd Half		1st Half		2nd Half	
						Qtr 1	Qtr 2	Qtr 3	Qtr 4	Qtr 1	Qtr 2	Qtr 3	Qtr 4
165		Install MEPS	3 days	Fri 8/16/19	Tue 8/20/19								
166		Inspect	1 day	Wed 8/21/19	Wed 8/21/19								
167		Back Fill	3 days	Thu 8/22/19	Mon 8/26/19								
168		Fine Grade	2 days	Mon 8/26/19	Tue 8/27/19								
169		Capillary Break	2 days	Tue 8/27/19	Wed 8/28/19								
170		Stego	2 days	Wed 8/28/19	Thu 8/29/19								
171		Bottom Mat Rebar	3 days	Thu 8/29/19	Tue 9/3/19								
172		In-Slab MEPS	3 days	Tue 9/3/19	Thu 9/5/19								
173		Top Mat Rebar	3 days	Fri 9/6/19	Tue 9/10/19								
174		Hung Forms	4 days	Tue 9/10/19	Fri 9/13/19								
175		Rebar Templates/Dowels/Embeds	4 days	Thu 9/12/19	Tue 9/17/19								
176		Inspect	1 day	Wed 9/18/19	Wed 9/18/19								
177		Pour	1 day	Thu 9/19/19	Thu 9/19/19								
178		Strip	4 days	Fri 9/20/19	Wed 9/25/19								
179		SOG Pour 3	31 days	Fri 9/13/19	Fri 10/25/19								
180		Perimeter Form	5 days	Fri 9/13/19	Thu 9/19/19								
181		Shut-Offs	5 days	Fri 9/20/19	Thu 9/26/19								
182		Sub Slab MEPS	10 days	Fri 9/13/19	Thu 9/26/19								
183		Excavate	3 days	Fri 9/13/19	Tue 9/17/19								
184		Install MEPS	3 days	Wed 9/18/19	Fri 9/20/19								
185		Inspect	1 day	Mon 9/23/19	Mon 9/23/19								
186		Back Fill	3 days	Tue 9/24/19	Thu 9/26/19								
187		Fine Grade	2 days	Thu 9/26/19	Fri 9/27/19								
188		Capillary Break	2 days	Fri 9/27/19	Mon 9/30/19								
189		Stego	2 days	Mon 9/30/19	Tue 10/1/19								
190		Bottom Mat Rebar	3 days	Tue 10/1/19	Thu 10/3/19								
191		In-Slab MEPS	3 days	Thu 10/3/19	Mon 10/7/19								
192		Top Mat Rebar	3 days	Tue 10/8/19	Thu 10/10/19								
193		Hung Forms	4 days	Thu 10/10/19	Tue 10/15/19								
194		Rebar Templates/Dowels/Embeds	4 days	Mon 10/14/19	Thu 10/17/19								
195		Inspect	1 day	Fri 10/18/19	Fri 10/18/19								
196		Pour	1 day	Mon 10/21/19	Mon 10/21/19								
197		Strip	4 days	Tue 10/22/19	Fri 10/25/19								
198		PT Slab	70 days	Fri 9/13/19	Mon 12/23/19								
199		Columns & Walls	46 days	Fri 9/13/19	Fri 11/15/19								
200		Pour 1	19 days	Fri 9/13/19	Wed 10/9/19								
201		Layout	1 day	Fri 9/13/19	Fri 9/13/19								
202		Install Column Rebar Cages (35 ea)	2 days	Mon 9/16/19	Tue 9/17/19								
203		Inspect	1 day	Wed 9/18/19	Wed 9/18/19								
204		Form Columns	2 days	Thu 9/19/19	Fri 9/20/19								
205		Pour	1 day	Mon 9/23/19	Mon 9/23/19								

Project: 88 Broadway GMP Sche
Date: Mon 4/8/19

Task		Project Summary		Manual Task		Start-only		Deadline	
Split		Inactive Task		Duration-only		Finish-only		Progress	
Milestone		Inactive Milestone		Manual Summary Rollup		External Tasks		Manual Progress	
Summary		Inactive Summary		Manual Summary		External Milestone			

88 Broadway Schedule

ID	Task Mode	Task Name	Duration	Start	Finish	1st Half		2nd Half		1st Half		2nd Half	
						Qtr 1	Qtr 2	Qtr 3	Qtr 4	Qtr 1	Qtr 2	Qtr 3	Qtr 4
206		Strip Column Forms	5 days	Tue 9/24/19	Mon 9/30/19								
207		One Side Wall Forms (150 LF / 2100 SF)	4 days	Mon 9/16/19	Thu 9/19/19								
208		Layout Blockouts & In-wall MEPS	3 days	Thu 9/19/19	Mon 9/23/19								
209		Install Wall Rebar	4 days	Mon 9/23/19	Thu 9/26/19								
210		Inspect	1 day	Fri 9/27/19	Fri 9/27/19								
211		Shotcrete Walls	3 days	Mon 9/30/19	Wed 10/2/19								
212		Strip Walls	5 days	Thu 10/3/19	Wed 10/9/19								
213		Pour 2	19 days	Fri 9/20/19	Wed 10/16/19								
214		Layout	1 day	Fri 9/20/19	Fri 9/20/19								
215		Install Column Rebar Cages (35 ea)	2 days	Mon 9/23/19	Tue 9/24/19								
216		Inspect	1 day	Wed 9/25/19	Wed 9/25/19								
217		Form Columns	2 days	Thu 9/26/19	Fri 9/27/19								
218		Pour	1 day	Mon 9/30/19	Mon 9/30/19								
219		Strip Column Forms	5 days	Tue 10/1/19	Mon 10/7/19								
220		One Side Wall Forms (150 LF / 2100 SF)	4 days	Mon 9/23/19	Thu 9/26/19								
221		Layout Blockouts & In-wall MEPS	3 days	Thu 9/26/19	Mon 9/30/19								
222		Install Wall Rebar	4 days	Mon 9/30/19	Thu 10/3/19								
223		Inspect	1 day	Fri 10/4/19	Fri 10/4/19								
224		Shotcrete Walls	3 days	Mon 10/7/19	Wed 10/9/19								
225		Strip Walls	5 days	Thu 10/10/19	Wed 10/16/19								
226		Pour 3	19 days	Tue 10/22/19	Fri 11/15/19								
227		Layout	1 day	Tue 10/22/19	Tue 10/22/19								
228		Install Column Rebar Cages (35 ea)	2 days	Wed 10/23/19	Thu 10/24/19								
229		Inspect	1 day	Fri 10/25/19	Fri 10/25/19								
230		Form Columns	2 days	Mon 10/28/19	Tue 10/29/19								
231		Pour	1 day	Wed 10/30/19	Wed 10/30/19								
232		Strip Column Forms	5 days	Thu 10/31/19	Wed 11/6/19								
233		One Side Wall Forms (150 LF / 2100 SF)	4 days	Wed 10/23/19	Mon 10/28/19								
234		Layout Blockouts & In-wall MEPS	3 days	Mon 10/28/19	Wed 10/30/19								
235		Install Wall Rebar	4 days	Wed 10/30/19	Mon 11/4/19								
236		Inspect	1 day	Tue 11/5/19	Tue 11/5/19								
237		Shotcrete Walls	3 days	Wed 11/6/19	Fri 11/8/19								
238		Strip Walls	5 days	Mon 11/11/19	Fri 11/15/19								
239		Level 2 Slab/Deck	44 days	Mon 10/21/19	Mon 12/23/19								
240		Pour 2 (North Section)	36 days	Mon 10/21/19	Wed 12/11/19								
241		Form Deck	4 days	Mon 10/21/19	Thu 10/24/19								
242		MEPS Layout / Sleeves	2 days	Thu 10/24/19	Fri 10/25/19								
243		Install Edge Forms	3 days	Fri 10/25/19	Tue 10/29/19								
244		Bottom Mat Rebar / PT Cables	2 days	Wed 10/30/19	Thu 10/31/19								
245		In-Slab MEPS	2 days	Fri 11/1/19	Mon 11/4/19								
246		Top Mat Rebar	2 days	Tue 11/5/19	Wed 11/6/19								

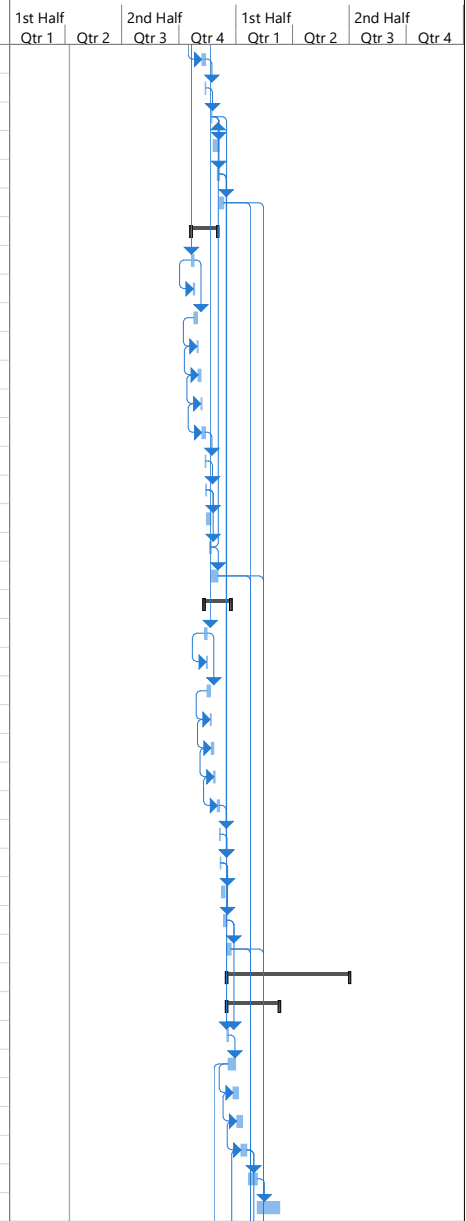


Project: 88 Broadway GMP Schedule
Date: Mon 4/8/19

Task		Project Summary		Manual Task		Start-only		Deadline	
Split		Inactive Task		Duration-only		Finish-only		Progress	
Milestone		Inactive Milestone		Manual Summary Rollup		External Tasks		Manual Progress	
Summary		Inactive Summary		Manual Summary		External Milestone			

88 Broadway Schedule

ID	Task Mode	Task Name	Duration	Start	Finish	1st Half		2nd Half		1st Half		2nd Half	
						Qtr 1	Qtr 2	Qtr 3	Qtr 4	Qtr 1	Qtr 2	Qtr 3	Qtr 4
247		Install Embeds/Hung Forms	3 days	Thu 11/7/19	Mon 11/11/19								
248		Inspect	1 day	Tue 11/12/19	Tue 11/12/19								
249		Pour Slab	1 day	Fri 11/22/19	Fri 11/22/19								
250		Strip Edge Forms	5 days	Mon 11/25/19	Tue 12/3/19								
251		Stress PT Cables	3 days	Mon 12/2/19	Wed 12/4/19								
252		Strip Deck / Re-Shore	5 days	Thu 12/5/19	Wed 12/11/19								
253		Pour 1 (Middle Section)	29 days	Mon 10/21/19	Mon 12/2/19								
254		Form Deck	4 days	Mon 10/21/19	Thu 10/24/19								
255		MEPS Layout / Sleeves	2 days	Thu 10/24/19	Fri 10/25/19								
256		Install Edge Forms	3 days	Fri 10/25/19	Tue 10/29/19								
257		Bottom Mat Rebar / PT Cables	2 days	Wed 10/30/19	Thu 10/31/19								
258		In-Slab MEPS	2 days	Fri 11/1/19	Mon 11/4/19								
259		Top Mat Rebar	2 days	Tue 11/5/19	Wed 11/6/19								
260		Install Embeds/Hung Forms	3 days	Thu 11/7/19	Mon 11/11/19								
261		Inspect	1 day	Tue 11/12/19	Tue 11/12/19								
262		Pour Slab	1 day	Wed 11/13/19	Wed 11/13/19								
263		Strip Edge Forms	5 days	Thu 11/14/19	Wed 11/20/19								
264		Stress PT Cables	3 days	Tue 11/19/19	Thu 11/21/19								
265		Strip Deck / Re-Shore	5 days	Fri 11/22/19	Mon 12/2/19								
266		Pour 3 (South Section)	29 days	Mon 11/11/19	Mon 12/23/19								
267		Form Deck	4 days	Mon 11/11/19	Thu 11/14/19								
268		MEPS Layout / Sleeves	2 days	Thu 11/14/19	Fri 11/15/19								
269		Install Edge Forms	3 days	Fri 11/15/19	Tue 11/19/19								
270		Bottom Mat Rebar / PT Cables	2 days	Wed 11/20/19	Thu 11/21/19								
271		In-Slab MEPS	2 days	Fri 11/22/19	Mon 11/25/19								
272		Top Mat Rebar	2 days	Tue 11/26/19	Wed 11/27/19								
273		Install Embeds/Hung Forms	3 days	Mon 12/2/19	Wed 12/4/19								
274		Inspect	1 day	Thu 12/5/19	Thu 12/5/19								
275		Pour Slab	1 day	Fri 12/6/19	Fri 12/6/19								
276		Strip Edge Forms	5 days	Mon 12/9/19	Fri 12/13/19								
277		Stress PT Cables	3 days	Thu 12/12/19	Mon 12/16/19								
278		Strip Deck / Re-Shore	5 days	Tue 12/17/19	Mon 12/23/19								
279		Structure - Wood Framing	137 days	Tue 12/17/19	Wed 7/1/20								
280		Level 2	57 days	Tue 12/17/19	Tue 3/10/20								
281		Layout	2 days	Tue 12/17/19	Wed 12/18/19								
282		Wall Frame	7 days	Thu 12/19/19	Mon 12/30/19								
283		Plumb & Line	5 days	Fri 12/27/19	Fri 1/3/20								
284		Install DWV	7 days	Thu 1/2/20	Fri 1/10/20								
285		Joist/Beam/Subfloor	7 days	Thu 1/9/20	Fri 1/17/20								
286		Interior Shear	10 days	Tue 1/21/20	Mon 2/3/20								
287		Pick-up	25 days	Tue 2/4/20	Tue 3/10/20								



Project: 88 Broadway GMP Sche
Date: Mon 4/8/19

Task		Project Summary		Manual Task		Start-only		Deadline	
Split		Inactive Task		Duration-only		Finish-only		Progress	
Milestone		Inactive Milestone		Manual Summary Rollup		External Tasks		Manual Progress	
Summary		Inactive Summary		Manual Summary		External Milestone			

88 Broadway Schedule

ID	Task Mode	Task Name	Duration	Start	Finish	1st Half		2nd Half		1st Half		2nd Half	
						Qtr 1	Qtr 2	Qtr 3	Qtr 4	Qtr 1	Qtr 2	Qtr 3	Qtr 4
288		Level 3	57 days	Thu 1/16/20	Tue 4/7/20								
289		Layout	2 days	Thu 1/16/20	Fri 1/17/20								
290		Wall Frame	7 days	Tue 1/21/20	Wed 1/29/20								
291		Plumb & Line	5 days	Tue 1/28/20	Mon 2/3/20								
292		Install DWV	7 days	Fri 1/31/20	Mon 2/10/20								
293		Joist/Beam/Subfloor	7 days	Fri 2/7/20	Tue 2/18/20								
294		Interior Shear	10 days	Wed 2/19/20	Tue 3/3/20								
295		Pick-up	25 days	Wed 3/4/20	Tue 4/7/20								
296		Level 4	57 days	Fri 2/14/20	Tue 5/5/20								
297		Layout	2 days	Fri 2/14/20	Tue 2/18/20								
298		Wall Frame	7 days	Wed 2/19/20	Thu 2/27/20								
299		Plumb & Line	5 days	Wed 2/26/20	Tue 3/3/20								
300		Install DWV	7 days	Mon 3/2/20	Tue 3/10/20								
301		Joist/Beam/Subfloor	7 days	Mon 3/9/20	Tue 3/17/20								
302		Interior Shear	10 days	Wed 3/18/20	Tue 3/31/20								
303		Pick-up	25 days	Wed 4/1/20	Tue 5/5/20								
304		Level 5	57 days	Mon 3/16/20	Wed 6/3/20								
305		Layout	2 days	Mon 3/16/20	Tue 3/17/20								
306		Wall Frame	7 days	Wed 3/18/20	Thu 3/26/20								
307		Plumb & Line	5 days	Wed 3/25/20	Tue 3/31/20								
308		Install DWV	7 days	Mon 3/30/20	Tue 4/7/20								
309		Joist/Beam/Subfloor	7 days	Mon 4/6/20	Tue 4/14/20								
310		Interior Shear	10 days	Wed 4/15/20	Tue 4/28/20								
311		Pick-up	25 days	Wed 4/29/20	Wed 6/3/20								
312		Level 6	57 days	Mon 4/13/20	Wed 7/1/20								
313		Layout	2 days	Mon 4/13/20	Tue 4/14/20								
314		Wall Frame	7 days	Wed 4/15/20	Thu 4/23/20								
315		Plumb & Line	5 days	Wed 4/22/20	Tue 4/28/20								
316		Install DWV	7 days	Mon 4/27/20	Tue 5/5/20								
317		Roof Joists & Sheathing	7 days	Mon 5/4/20	Tue 5/12/20								
318		Interior Shear	10 days	Wed 5/13/20	Wed 5/27/20								
319		Pick-up	25 days	Thu 5/28/20	Wed 7/1/20								
320		Roof Joists & Sheathing	34 days	Mon 5/11/20	Fri 6/26/20								
321		Parapet/Penthouse Framing and Blocking	10 days	Mon 5/11/20	Fri 5/22/20								
322		Curbs/Pads	5 days	Tue 5/26/20	Mon 6/1/20								
323		Install SHW Stanchions/EMB Bases	5 days	Tue 5/26/20	Mon 6/1/20								
324		Densglass Parapets / Penthouses	5 days	Fri 5/22/20	Fri 5/29/20								
325		Tapered Rigid / Roofing	20 days	Mon 6/1/20	Fri 6/26/20								
326		Exterior Skin	247 days	Thu 12/19/19	Thu 12/10/20								
327		Exterior Scaffold	247 days	Thu 12/19/19	Thu 12/10/20								
328		Front Elevation	222 days	Thu 12/19/19	Tue 11/3/20								

Project: 88 Broadway GMP Sche
Date: Mon 4/8/19

Task		Project Summary		Manual Task		Start-only		Deadline	
Split		Inactive Task		Duration-only		Finish-only		Progress	
Milestone		Inactive Milestone		Manual Summary Rollup		External Tasks		Manual Progress	
Summary		Inactive Summary		Manual Summary		External Milestone			

88 Broadway Schedule

ID	Task Mode	Task Name	Duration	Start	Finish	1st Half		2nd Half		1st Half		2nd Half	
						Qtr 1	Qtr 2	Qtr 3	Qtr 4	Qtr 1	Qtr 2	Qtr 3	Qtr 4
329		Erect Scaffold	20 days	Thu 12/19/19	Fri 1/17/20								
330		Dismantle Scaffold	10 days	Wed 10/21/20	Tue 11/3/20								
331		Vallejo Elevation	232 days	Thu 12/19/19	Tue 11/17/20								
332		Erect Scaffold	20 days	Thu 12/19/19	Fri 1/17/20								
333		Dismantle Scaffold	10 days	Wed 11/4/20	Tue 11/17/20								
334		Broadway Elevation	237 days	Thu 12/19/19	Tue 11/24/20								
335		Erect Scaffold	20 days	Thu 12/19/19	Fri 1/17/20								
336		Dismantle Scaffold	10 days	Wed 11/11/20	Tue 11/24/20								
337		Mid-Block Passage Elevation	247 days	Thu 12/19/19	Thu 12/10/20								
338		Erect Scaffold	20 days	Thu 12/19/19	Fri 1/17/20								
339		Dismantle Scaffold	10 days	Wed 11/25/20	Thu 12/10/20								
340		Exterior Dens Glass	20 days	Fri 4/24/20	Thu 5/21/20								
341		Front Elevation	20 days	Fri 4/24/20	Thu 5/21/20								
342		Vallejo Elevation	20 days	Fri 4/24/20	Thu 5/21/20								
343		Broadway Elevation	20 days	Fri 4/24/20	Thu 5/21/20								
344		Mid-Block Passage Elevation	20 days	Fri 4/24/20	Thu 5/21/20								
345		Flash Exterior Openings	20 days	Fri 5/22/20	Fri 6/19/20								
346		Front Elevation	20 days	Fri 5/22/20	Fri 6/19/20								
347		Vallejo Elevation	20 days	Fri 5/22/20	Fri 6/19/20								
348		Broadway Elevation	20 days	Fri 5/22/20	Fri 6/19/20								
349		Mid-Block Passage Elevation	20 days	Fri 5/22/20	Fri 6/19/20								
350		Windows	15 days	Mon 6/22/20	Mon 7/13/20								
351		Front Elevation	15 days	Mon 6/22/20	Mon 7/13/20								
352		Vallejo Elevation	15 days	Mon 6/22/20	Mon 7/13/20								
353		Broadway Elevation	15 days	Mon 6/22/20	Mon 7/13/20								
354		Mid-Block Passage Elevation	15 days	Mon 6/22/20	Mon 7/13/20								
355		Steel Penetrations/Misc Flashings	10 days	Tue 7/14/20	Mon 7/27/20								
356		Front Elevation	10 days	Tue 7/14/20	Mon 7/27/20								
357		Vallejo Elevation	10 days	Tue 7/14/20	Mon 7/27/20								
358		Broadway Elevation	10 days	Tue 7/14/20	Mon 7/27/20								
359		Mid-Block Passage Elevation	10 days	Tue 7/14/20	Mon 7/27/20								
360		Plaster	85 days	Tue 7/28/20	Tue 11/24/20								
361		Front Elevation	15 days	Tue 7/28/20	Mon 8/17/20								
362		Plaster Lath & Trim	10 days	Tue 7/28/20	Mon 8/10/20								
363		Plaster Scratch, Brown & Finish	5 days	Tue 8/11/20	Mon 8/17/20								
364		Vallejo Elevation	15 days	Tue 8/11/20	Mon 8/31/20								
365		Plaster Lath & Trim	10 days	Tue 8/11/20	Mon 8/24/20								
366		Plaster Scratch, Brown & Finish	5 days	Tue 8/25/20	Mon 8/31/20								
367		Broadway Elevation	15 days	Tue 8/25/20	Tue 9/15/20								
368		Plaster Lath & Trim	10 days	Tue 8/25/20	Tue 9/8/20								
369		Plaster Scratch, Brown & Finish	5 days	Wed 9/9/20	Tue 9/15/20								

Project: 88 Broadway GMP Sche
Date: Mon 4/8/19

Task		Project Summary		Manual Task		Start-only		Deadline	
Split		Inactive Task		Duration-only		Finish-only		Progress	
Milestone		Inactive Milestone		Manual Summary Rollup		External Tasks		Manual Progress	
Summary		Inactive Summary		Manual Summary		External Milestone			

88 Broadway Schedule

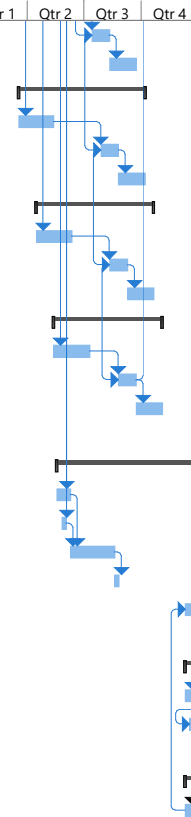
ID	Task Mode	Task Name	Duration	Start	Finish	1st Half		2nd Half		1st Half		2nd Half	
						Qtr 1	Qtr 2	Qtr 3	Qtr 4	Qtr 1	Qtr 2	Qtr 3	Qtr 4
370		Mid-Block Passage Elevation	15 days	Wed 9/9/20	Tue 9/29/20								
371		Plaster Lath & Trim	10 days	Wed 9/9/20	Tue 9/22/20								
372		Plaster Scratch, Brown & Finish	5 days	Wed 9/23/20	Tue 9/29/20								
373		Exterior Finishes	70 days	Tue 8/18/20	Tue 11/24/20								
374		Front Elevation	45 days	Tue 8/18/20	Tue 10/20/20								
375		Fiber Cement Panels	10 days	Tue 8/18/20	Mon 8/31/20								
376		Thin Set Tile	10 days	Tue 9/1/20	Tue 9/15/20								
377		Paint & Sealants	10 days	Wed 9/16/20	Tue 9/29/20								
378		Clean Windows	5 days	Wed 9/30/20	Tue 10/6/20								
379		Punch	10 days	Wed 10/7/20	Tue 10/20/20								
380		Vallejo Elevation	45 days	Tue 9/1/20	Tue 11/3/20								
381		Fiber Cement Panels	10 days	Tue 9/1/20	Tue 9/15/20								
382		Thin Set Tile	10 days	Wed 9/16/20	Tue 9/29/20								
383		Paint & Sealants	10 days	Wed 9/30/20	Tue 10/13/20								
384		Clean Windows	5 days	Wed 10/14/20	Tue 10/20/20								
385		Punch	10 days	Wed 10/21/20	Tue 11/3/20								
386		Broadway Elevation	45 days	Wed 9/9/20	Tue 11/10/20								
387		Fiber Cement Panels	10 days	Wed 9/9/20	Tue 9/22/20								
388		Thin Set Tile	10 days	Wed 9/23/20	Tue 10/6/20								
389		Paint & Sealants	10 days	Wed 10/7/20	Tue 10/20/20								
390		Clean Windows	5 days	Wed 10/21/20	Tue 10/27/20								
391		Punch	10 days	Wed 10/28/20	Tue 11/10/20								
392		Mid-Block Passage Elevation	45 days	Wed 9/23/20	Tue 11/24/20								
393		Fiber Cement Panels	10 days	Wed 9/23/20	Tue 10/6/20								
394		Thin Set Tile	10 days	Wed 10/7/20	Tue 10/20/20								
395		Paint & Sealants	10 days	Wed 10/21/20	Tue 11/3/20								
396		Clean Windows	5 days	Wed 11/4/20	Tue 11/10/20								
397		Punch	10 days	Wed 11/11/20	Tue 11/24/20								
398		Interior	227 days	Tue 1/21/20	Thu 12/10/20								
399		Level 1	224 days	Fri 1/24/20	Thu 12/10/20								
400		Layout / Install Top Track	5 days	Fri 1/24/20	Thu 1/30/20								
401		Metal Stud Framing	10 days	Fri 1/31/20	Thu 2/13/20								
402		MEPS Rough	30 days	Fri 2/14/20	Fri 3/27/20								
403		Drywall	20 days	Wed 9/23/20	Tue 10/20/20								
404		Finishes	35 days	Wed 10/21/20	Thu 12/10/20								
405		Level 2	162 days	Tue 1/21/20	Tue 9/8/20								
406		MEPS Rough	30 days	Tue 1/21/20	Tue 3/3/20								
407		Drywall	20 days	Mon 6/29/20	Mon 7/27/20								
408		Finishes	30 days	Tue 7/28/20	Tue 9/8/20								
409		Level 3	152 days	Wed 2/19/20	Tue 9/22/20								
410		MEPS Rough	40 days	Wed 2/19/20	Tue 4/14/20								

Project: 88 Broadway GMP Schedule
Date: Mon 4/8/19

Task		Project Summary		Manual Task		Start-only		Deadline	
Split		Inactive Task		Duration-only		Finish-only		Progress	
Milestone		Inactive Milestone		Manual Summary Rollup		External Tasks		Manual Progress	
Summary		Inactive Summary		Manual Summary		External Milestone			

88 Broadway Schedule

ID	Task Mode	Task Name	Duration	Start	Finish	1st Half		2nd Half		1st Half		2nd Half	
						Qtr 1	Qtr 2	Qtr 3	Qtr 4	Qtr 1	Qtr 2	Qtr 3	Qtr 4
411		Drywall	20 days	Tue 7/14/20	Mon 8/10/20								
412		Finishes	30 days	Tue 8/11/20	Tue 9/22/20								
413		Level 4	142 days	Wed 3/18/20	Tue 10/6/20								
414		MEPS Rough	40 days	Wed 3/18/20	Tue 5/12/20								
415		Drywall	20 days	Tue 7/28/20	Mon 8/24/20								
416		Finishes	30 days	Tue 8/25/20	Tue 10/6/20								
417		Level 5	132 days	Wed 4/15/20	Tue 10/20/20								
418		MEPS Rough	40 days	Wed 4/15/20	Wed 6/10/20								
419		Drywall	20 days	Tue 8/11/20	Tue 9/8/20								
420		Finishes	30 days	Wed 9/9/20	Tue 10/20/20								
421		Level 6	122 days	Wed 5/13/20	Tue 11/3/20								
422		MEPS Rough	40 days	Wed 5/13/20	Thu 7/9/20								
423		Drywall	20 days	Tue 8/25/20	Tue 9/22/20								
424		Finishes	30 days	Wed 9/23/20	Tue 11/3/20								
425													
426		Elevators	164 days	Mon 5/18/20	Fri 1/8/21								
427		Hoistway, Embeds, Guiderails	15 days	Mon 5/18/20	Mon 6/8/20								
428		Penthouse Roofing	5 days	Tue 5/26/20	Mon 6/1/20								
429		Install Elevator	50 days	Tue 6/9/20	Tue 8/18/20								
430		State Inspection - Temp Elevator Use	5 days	Wed 8/19/20	Tue 8/25/20								
431		Complete Elevator - State Inspection	20 days	Fri 12/11/20	Fri 1/8/21								
432													
433		Site & Civil Work	30 days	Fri 12/11/20	Mon 1/25/21								
434		Ground Level	25 days	Fri 12/11/20	Fri 1/15/21								
435		Municipal Work, Streetscape	25 days	Fri 12/18/20	Mon 1/25/21								
436													
437		Inspections/Testing/Commissioning	46 days	Fri 12/11/20	Wed 2/17/21								
438		Life Safety Testing, Commissioning	15 days	Fri 12/11/20	Fri 1/1/21								
439		City Inspections	15 days	Mon 1/4/21	Mon 1/25/21								
440		Rain Days	15 days	Tue 1/26/21	Tue 2/16/21								
441		TCO	1 day	Wed 2/17/21	Wed 2/17/21								



Project: 88 Broadway GMP Sche
Date: Mon 4/8/19

Task		Project Summary		Manual Task		Start-only		Deadline	
Split		Inactive Task		Duration-only		Finish-only		Progress	
Milestone		Inactive Milestone		Manual Summary Rollup		External Tasks		Manual Progress	
Summary		Inactive Summary		Manual Summary		External Milestone			