

Exhibit C

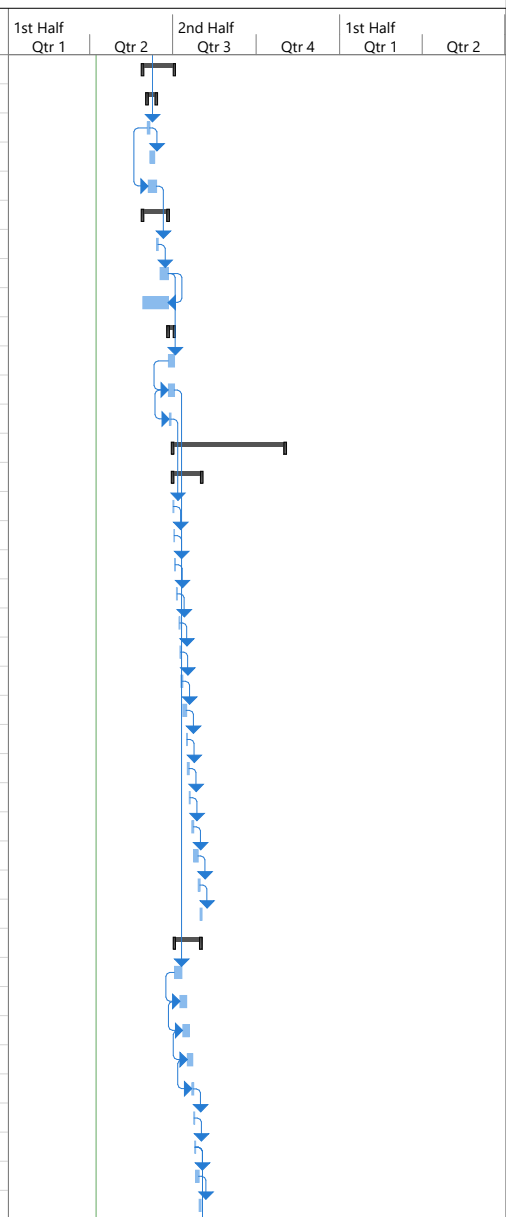
735 Davis Schedule

ID	Task Mode	Task Name	Duration	Start	Finish	1st Half Qtr 1	Qtr 2	2nd Half Qtr 3	Qtr 4	1st Half Qtr 1	Qtr 2
1		Permitting	85 days	Wed 12/12/18	Mon 4/15/19						
2		Addendum 1 (Demo & Grading)	64 days	Wed 12/12/18	Fri 3/15/19						
3		Addendum 2 (Foundation & Podium)	64 days	Wed 12/12/18	Fri 3/15/19						
4		Addendum 3 (Wood Superstructure)	63 days	Tue 1/15/19	Mon 4/15/19						
5		GMP Pricing, Contracts	71 days	Tue 1/22/19	Wed 5/1/19						
6	✓	100% CD Set	1 day	Tue 1/22/19	Tue 1/22/19						
7	✓	GMP Bids (30 calendar days)	22 days	Wed 1/23/19	Fri 2/22/19						
8	✓	Level Bids	10 days	Mon 2/25/19	Fri 3/8/19						
9	✓	VE	10 days	Mon 3/11/19	Fri 3/22/19						
10		Owner Contract	8 days	Mon 3/25/19	Wed 4/3/19						
11		Lender Review	21 days	Wed 4/3/19	Wed 5/1/19						
12		Early Work	76 days	Mon 2/25/19	Tue 6/11/19						
13		ACP Test Pile Program (Same as 88)	76 days	Mon 2/25/19	Tue 6/11/19						
14		Owner Authorization for Test Piles	14 days	Mon 2/25/19	Thu 3/14/19						
15		Subcontract Design/Generate Test Pile Submittal	11 days	Fri 3/15/19	Fri 3/29/19						
16		Engineer Review and Approve Test Pile Submittal	5 days	Mon 4/1/19	Fri 4/5/19						
17		Procure Test Pile Material	5 days	Mon 4/8/19	Fri 4/12/19						
18		Mobilize	3 days	Mon 4/15/19	Wed 4/17/19						
19		Set up Temp Water	1 day	Mon 4/15/19	Mon 4/15/19						
20		Survey/ Layout Load Test and Indicator Pile	1 day	Mon 4/15/19	Mon 4/15/19						
21		Install Load Test / Reaction Piles	2 days	Thu 4/18/19	Fri 4/19/19						
22		Install Indicator Piles	2 days	Mon 4/22/19	Tue 4/23/19						
23		Pile Spoil Sampling for Load Test and Indicator Piles (RPS)	4 days	Thu 4/18/19	Tue 4/23/19						
24		Pile Spoil Testing/ Receive Results- Determine Classification	5 days	Wed 4/24/19	Tue 4/30/19						
25		Cure Time (25 calendar days)	25 edays	Fri 4/19/19	Tue 5/14/19						
26		Prep PDA Piles	3 days	Wed 4/24/19	Fri 4/26/19						
27		Set-Up COMP Load Test Frame	1 day	Tue 5/14/19	Tue 5/14/19						
28		Perform COMP Load Test	1 day	Wed 5/15/19	Wed 5/15/19						
29		Set-Up TENSION Load Test Frame	1 day	Thu 5/16/19	Thu 5/16/19						
30		Perform TENSION Load Test	1 day	Fri 5/17/19	Fri 5/17/19						
31		PDA Load Test & Indicator Piles	3 days	Mon 5/20/19	Wed 5/22/19						
32		Submit Load Test Report	1 day	Thu 5/23/19	Thu 5/23/19						
33		Submit PDA Report	1 day	Fri 5/24/19	Fri 5/24/19						
34		Review and Approve Test Program	5 days	Tue 5/28/19	Mon 6/3/19						
35		Material Fabrication	5 days	Tue 6/4/19	Mon 6/10/19						
36		Ready to Start Production Piles	1 day	Tue 6/11/19	Tue 6/11/19						
37		Construction	359 days	Tue 5/28/19	Mon 10/26/20						
38		Notice to Proceed	1 day	Tue 5/28/19	Tue 5/28/19						
39		Mobilization Equipment/Erect Fencing/Set up Trailer	4 days	Tue 5/28/19	Fri 5/31/19						
40											

Project: 735 Davis GMP Schedu Date: Mon 4/8/19	Task		Project Summary		Manual Task		Start-only		Deadline	
	Split		Inactive Task		Duration-only		Finish-only		Progress	
	Milestone		Inactive Milestone		Manual Summary Rollup		External Tasks		Manual Progress	
	Summary		Inactive Summary		Manual Summary		External Milestone			

735 Davis Schedule

ID	Task Mode	Task Name	Duration	Start	Finish	1st Half		2nd Half		1st Half	
						Qtr 1	Qtr 2	Qtr 3	Qtr 4	Qtr 1	Qtr 2
41		Site Demo/Earthwork/Piles/Subgrade Improvements	25 days	Wed 5/29/19	Tue 7/2/19						
42		Site Demo	8 days	Mon 6/3/19	Wed 6/12/19						
43		Survey / Control / Layout	3 days	Mon 6/3/19	Wed 6/5/19						
44		Safe-off Utilities	3 days	Thu 6/6/19	Mon 6/10/19						
45		Demo Onsite Concrete/AC to Bottom of Slab	7 days	Tue 6/4/19	Wed 6/12/19						
46		Auger Cast Piles	20 days	Wed 5/29/19	Tue 6/25/19						
47		Mobilize	2 days	Thu 6/13/19	Fri 6/14/19						
48		Install Piles (44 Piles)	7 days	Mon 6/17/19	Tue 6/25/19						
49		Stock Pile ACP Spoils for Waste Characterization	20 days	Wed 5/29/19	Tue 6/25/19						
50		Shoring / Earthwork	5 days	Wed 6/26/19	Tue 7/2/19						
51		Localized Shoring @ Perimeter of Site	5 days	Wed 6/26/19	Tue 7/2/19						
52		Rough Grade Site	5 days	Wed 6/26/19	Tue 7/2/19						
53		Excavate Elevator Pit	2 days	Thu 6/27/19	Fri 6/28/19						
54		Structure - Concrete	88 days	Mon 7/1/19	Fri 11/1/19						
55		Elevator Pit	23 days	Mon 7/1/19	Thu 8/1/19						
56		Fine Grade	1 day	Mon 7/1/19	Mon 7/1/19						
57		Sheet Waterproofing Horizontal	1 day	Tue 7/2/19	Tue 7/2/19						
58		Edge Form	1 day	Wed 7/3/19	Wed 7/3/19						
59		Slab Rebar	1 day	Fri 7/5/19	Fri 7/5/19						
60		Inspect	1 day	Mon 7/8/19	Mon 7/8/19						
61		Pour Elevator Pit Slab	1 day	Tue 7/9/19	Tue 7/9/19						
62		Form Walls	2 days	Wed 7/10/19	Thu 7/11/19						
63		Wall Rebar	2 days	Fri 7/12/19	Mon 7/15/19						
64		Inspect	1 day	Tue 7/16/19	Tue 7/16/19						
65		Double-up Walls	2 days	Wed 7/17/19	Thu 7/18/19						
66		Pour Elevator Pit Walls	1 day	Fri 7/19/19	Fri 7/19/19						
67		Strip Walls	2 days	Mon 7/22/19	Tue 7/23/19						
68		Cure (7 calendar days)	5 edays	Tue 7/23/19	Sun 7/28/19						
69		Waterproof Walls	2 days	Mon 7/29/19	Tue 7/30/19						
70		Backfill Elevator Pit	2 days	Wed 7/31/19	Thu 8/1/19						
71		Grade Beams	20 days	Wed 7/3/19	Wed 7/31/19						
72		Excavate Grade Beams	5 days	Wed 7/3/19	Wed 7/10/19						
73		Trim Pile Caps	5 days	Tue 7/9/19	Mon 7/15/19						
74		Stay Form	5 days	Fri 7/12/19	Thu 7/18/19						
75		Rebar Cages	4 days	Wed 7/17/19	Mon 7/22/19						
76		MEPS Sleeves	2 days	Mon 7/22/19	Tue 7/23/19						
77		Inspect	1 day	Wed 7/24/19	Wed 7/24/19						
78		Pour	1 day	Thu 7/25/19	Thu 7/25/19						
79		Strip Stay Form Stakes	2 days	Fri 7/26/19	Mon 7/29/19						
80		Back Fill/Pour Lean Mix ??	2 days	Tue 7/30/19	Wed 7/31/19						



Project: 735 Davis GMP Schedu
Date: Mon 4/8/19

Task		Project Summary		Manual Task		Start-only		Deadline	
Split		Inactive Task		Duration-only		Finish-only		Progress	
Milestone		Inactive Milestone		Manual Summary Rollup		External Tasks		Manual Progress	
Summary		Inactive Summary		Manual Summary		External Milestone			

735 Davis Schedule

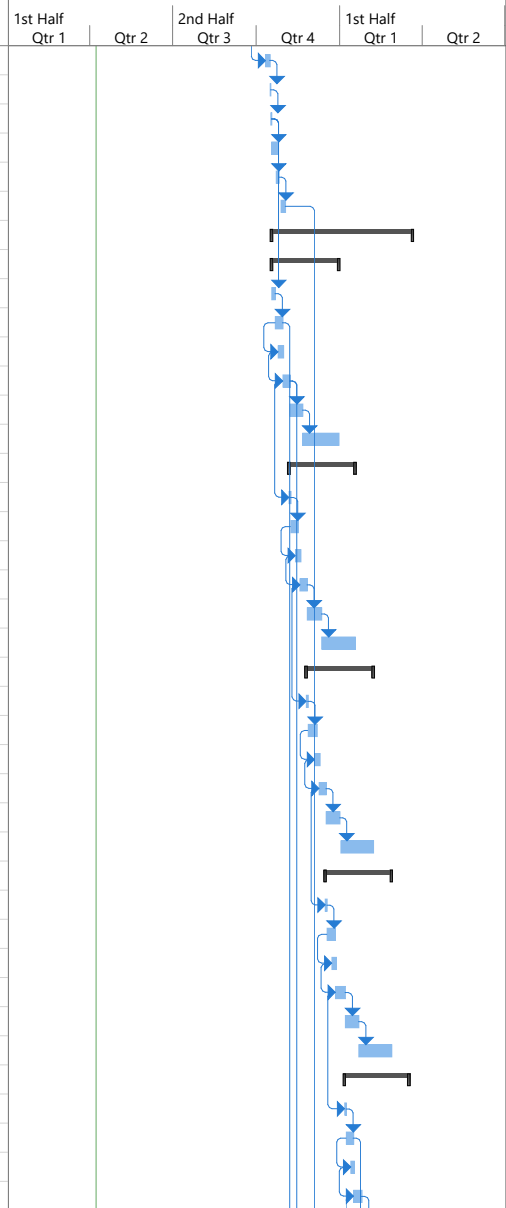
ID	Task Mode	Task Name	Duration	Start	Finish	1st Half Qtr 1	Qtr 2	2nd Half Qtr 3	Qtr 4	1st Half Qtr 1	Qtr 2
81		Slab-on-Grade	31 days	Fri 7/26/19	Mon 9/9/19						
82		Perimeter Form	5 days	Fri 7/26/19	Thu 8/1/19						
83		Shut-Offs	5 days	Fri 8/2/19	Thu 8/8/19						
84		Sub Slab MEPS	10 days	Fri 7/26/19	Thu 8/8/19						
85		Excavate	3 days	Fri 7/26/19	Tue 7/30/19						
86		Install MEPS	3 days	Wed 7/31/19	Fri 8/2/19						
87		Inspect	1 day	Mon 8/5/19	Mon 8/5/19						
88		Back Fill	3 days	Tue 8/6/19	Thu 8/8/19						
89		Fine Grade	2 days	Thu 8/8/19	Fri 8/9/19						
90		Capillary Break	2 days	Fri 8/9/19	Mon 8/12/19						
91		Stego	2 days	Mon 8/12/19	Tue 8/13/19						
92		Bottom Mat Rebar	3 days	Tue 8/13/19	Thu 8/15/19						
93		In-Slab MEPS	3 days	Thu 8/15/19	Mon 8/19/19						
94		Top Mat Rebar	3 days	Tue 8/20/19	Thu 8/22/19						
95		Hung Forms	4 days	Thu 8/22/19	Tue 8/27/19						
96		Rebar Templates/Dowels/Embeds	4 days	Mon 8/26/19	Thu 8/29/19						
97		Inspect	1 day	Fri 8/30/19	Fri 8/30/19						
98		Pour	1 day	Tue 9/3/19	Tue 9/3/19						
99		Strip	4 days	Wed 9/4/19	Mon 9/9/19						
100		PT Slab	43 days	Wed 9/4/19	Fri 11/1/19						
101		Columns & Walls	19 days	Wed 9/4/19	Mon 9/30/19						
102		Layout	1 day	Wed 9/4/19	Wed 9/4/19						
103		Install Column Rebar Cages (35 ea)	3 days	Thu 9/5/19	Mon 9/9/19						
104		Inspect	1 day	Tue 9/10/19	Tue 9/10/19						
105		Form Columns	5 days	Wed 9/11/19	Tue 9/17/19						
106		Pour	1 day	Wed 9/18/19	Wed 9/18/19						
107		Strip Column Forms	5 days	Thu 9/19/19	Wed 9/25/19						
108		One Side Wall Forms (150 LF / 2100 SF)	4 days	Thu 9/5/19	Tue 9/10/19						
109		Layout Blockouts & In-wall MEPS	3 days	Tue 9/10/19	Thu 9/12/19						
110		Install Wall Rebar	4 days	Thu 9/12/19	Tue 9/17/19						
111		Inspect	1 day	Wed 9/18/19	Wed 9/18/19						
112		Shotcrete Walls	3 days	Thu 9/19/19	Mon 9/23/19						
113		Strip Walls	5 days	Tue 9/24/19	Mon 9/30/19						
114		Level 2 Slab/Deck	29 days	Tue 9/24/19	Fri 11/1/19						
115		Form Deck	4 days	Tue 9/24/19	Fri 9/27/19						
116		MEPS Layout / Sleeves	2 days	Fri 9/27/19	Mon 9/30/19						
117		Install Edge Forms	3 days	Mon 9/30/19	Wed 10/2/19						
118		Bottom Mat Rebar / PT Cables	2 days	Thu 10/3/19	Fri 10/4/19						
119		In-Slab MEPS	2 days	Mon 10/7/19	Tue 10/8/19						
120		Top Mat Rebar	2 days	Wed 10/9/19	Thu 10/10/19						

Project: 735 Davis GMP Schedu
Date: Mon 4/8/19

Task		Project Summary		Manual Task		Start-only		Deadline	
Split		Inactive Task		Duration-only		Finish-only		Progress	
Milestone		Inactive Milestone		Manual Summary Rollup		External Tasks		Manual Progress	
Summary		Inactive Summary		Manual Summary		External Milestone			

735 Davis Schedule

ID	Task Mode	Task Name	Duration	Start	Finish	1st Half Qtr 1	Qtr 2	2nd Half Qtr 3	Qtr 4	1st Half Qtr 1	Qtr 2
121		Install Embeds/Hung Forms	3 days	Fri 10/11/19	Tue 10/15/19						
122		Inspect	1 day	Wed 10/16/19	Wed 10/16/19						
123		Pour Slab	1 day	Thu 10/17/19	Thu 10/17/19						
124		Strip Edge Forms	5 days	Fri 10/18/19	Thu 10/24/19						
125		Stress PT Cables	3 days	Wed 10/23/19	Fri 10/25/19						
126		Strip Deck / Re-Shore	5 days	Mon 10/28/19	Fri 11/1/19						
127		Structure - Wood Framing	105 days	Fri 10/18/19	Fri 3/20/20						
128		Level 2	49 days	Fri 10/18/19	Mon 12/30/19						
129		Layout	2 days	Fri 10/18/19	Mon 10/21/19						
130		Wall Frame	6 days	Tue 10/22/19	Tue 10/29/19						
131		Plumb & Line	4 days	Fri 10/25/19	Wed 10/30/19						
132		Joist/Beam/Subfloor	6 days	Wed 10/30/19	Wed 11/6/19						
133		Interior Shear	10 days	Thu 11/7/19	Wed 11/20/19						
134		Pick-up	25 days	Thu 11/21/19	Mon 12/30/19						
135		Level 3	49 days	Wed 11/6/19	Fri 1/17/20						
136		Layout	2 days	Wed 11/6/19	Thu 11/7/19						
137		Wall Frame	6 days	Fri 11/8/19	Fri 11/15/19						
138		Plumb & Line	4 days	Wed 11/13/19	Mon 11/18/19						
139		Joist/Beam/Subfloor	6 days	Mon 11/18/19	Mon 11/25/19						
140		Interior Shear	10 days	Tue 11/26/19	Wed 12/11/19						
141		Pick-up	25 days	Thu 12/12/19	Fri 1/17/20						
142		Level 4	49 days	Mon 11/25/19	Thu 2/6/20						
143		Layout	2 days	Mon 11/25/19	Tue 11/26/19						
144		Wall Frame	6 days	Wed 11/27/19	Fri 12/6/19						
145		Plumb & Line	4 days	Wed 12/4/19	Mon 12/9/19						
146		Joist/Beam/Subfloor	6 days	Mon 12/9/19	Mon 12/16/19						
147		Interior Shear	10 days	Tue 12/17/19	Tue 12/31/19						
148		Pick-up	25 days	Thu 1/2/20	Thu 2/6/20						
149		Level 5	49 days	Mon 12/16/19	Wed 2/26/20						
150		Layout	2 days	Mon 12/16/19	Tue 12/17/19						
151		Wall Frame	6 days	Wed 12/18/19	Thu 12/26/19						
152		Plumb & Line	4 days	Mon 12/23/19	Fri 12/27/19						
153		Joist/Beam/Subfloor	6 days	Fri 12/27/19	Mon 1/6/20						
154		Interior Shear	10 days	Tue 1/7/20	Tue 1/21/20						
155		Pick-up	25 days	Wed 1/22/20	Wed 2/26/20						
156		Level 6	49 days	Mon 1/6/20	Mon 3/16/20						
157		Layout	2 days	Mon 1/6/20	Tue 1/7/20						
158		Wall Frame	6 days	Wed 1/8/20	Wed 1/15/20						
159		Plumb & Line	4 days	Mon 1/13/20	Thu 1/16/20						
160		Roof Joists & Sheathing	6 days	Thu 1/16/20	Fri 1/24/20						



Project: 735 Davis GMP Schedu
Date: Mon 4/8/19

Task		Project Summary		Manual Task		Start-only		Deadline	
Split		Inactive Task		Duration-only		Finish-only		Progress	
Milestone		Inactive Milestone		Manual Summary Rollup		External Tasks		Manual Progress	
Summary		Inactive Summary		Manual Summary		External Milestone			

735 Davis Schedule

ID	Task Mode	Task Name	Duration	Start	Finish	1st Half Qtr 1	Qtr 2	2nd Half Qtr 3	Qtr 4	1st Half Qtr 1	Qtr 2
161		Interior Shear	10 days	Mon 1/27/20	Fri 2/7/20						
162		Pick-up	25 days	Mon 2/10/20	Mon 3/16/20						
163		Roof Joists & Sheathing	40 days	Fri 1/24/20	Fri 3/20/20						
164		Parapet/Penthouse Framing and Blocking	10 days	Fri 1/24/20	Thu 2/6/20						
165		Curbs/Pads	5 days	Fri 2/7/20	Thu 2/13/20						
166		Install SHW Stanchions/EMB Bases	5 days	Fri 2/14/20	Fri 2/21/20						
167		Densglass Parapets / Penthouses	5 days	Mon 2/24/20	Fri 2/28/20						
168		Tapered Rigid / Roofing	15 days	Mon 3/2/20	Fri 3/20/20						
169		Exterior Skin	182 days	Wed 10/30/19	Tue 7/21/20						
170		Exterior Scaffold	182 days	Wed 10/30/19	Tue 7/21/20						
171		Davis Elevation	157 days	Wed 10/30/19	Mon 6/15/20						
172		Erect Scaffold	20 days	Wed 10/30/19	Tue 11/26/19						
173		Dismantle Scaffold	10 days	Tue 6/2/20	Mon 6/15/20						
174		North Elevation	167 days	Wed 10/30/19	Mon 6/29/20						
175		Erect Scaffold	20 days	Wed 10/30/19	Tue 11/26/19						
176		Dismantle Scaffold	10 days	Tue 6/16/20	Mon 6/29/20						
177		South Elevation	172 days	Wed 10/30/19	Tue 7/7/20						
178		Erect Scaffold	20 days	Wed 10/30/19	Tue 11/26/19						
179		Dismantle Scaffold	10 days	Tue 6/23/20	Tue 7/7/20						
180		Mid-Block Passage Elevation	182 days	Wed 10/30/19	Tue 7/21/20						
181		Erect Scaffold	20 days	Wed 10/30/19	Tue 11/26/19						
182		Dismantle Scaffold	10 days	Wed 7/8/20	Tue 7/21/20						
183		Exterior Dens Glass	15 days	Thu 1/16/20	Thu 2/6/20						
184		Davis Elevation	15 days	Thu 1/16/20	Thu 2/6/20						
185		North Elevation	15 days	Thu 1/16/20	Thu 2/6/20						
186		South Elevation	15 days	Thu 1/16/20	Thu 2/6/20						
187		Mid-Block Passage Elevation	15 days	Thu 1/16/20	Thu 2/6/20						
188		Flash Exterior Openings	15 days	Fri 2/7/20	Fri 2/28/20						
189		Davis Elevation	15 days	Fri 2/7/20	Fri 2/28/20						
190		North Elevation	15 days	Fri 2/7/20	Fri 2/28/20						
191		South Elevation	15 days	Fri 2/7/20	Fri 2/28/20						
192		Mid-Block Passage Elevation	15 days	Fri 2/7/20	Fri 2/28/20						
193		Windows	10 days	Mon 3/2/20	Fri 3/13/20						
194		Davis Elevation	10 days	Mon 3/2/20	Fri 3/13/20						
195		North Elevation	10 days	Mon 3/2/20	Fri 3/13/20						
196		South Elevation	10 days	Mon 3/2/20	Fri 3/13/20						
197		Mid-Block Passage Elevation	10 days	Mon 3/2/20	Fri 3/13/20						
198		Steel Penetrations/Misc Flashings	10 days	Mon 3/16/20	Fri 3/27/20						
199		Davis Elevation	10 days	Mon 3/16/20	Fri 3/27/20						
200		North Elevation	10 days	Mon 3/16/20	Fri 3/27/20						

Project: 735 Davis GMP Schedu
Date: Mon 4/8/19

Task	Project Summary	Manual Task	Start-only	Deadline	↓
Split	Inactive Task	Duration-only	Finish-only	Progress	
Milestone	Inactive Milestone	Manual Summary Rollup	External Tasks	Manual Progress	
Summary	Inactive Summary	Manual Summary	External Milestone		

735 Davis Schedule

ID	Task Mode	Task Name	Duration	Start	Finish	1st Half Qtr 1	Qtr 2	2nd Half Qtr 3	Qtr 4	1st Half Qtr 1	Qtr 2
201		South Elevation	10 days	Mon 3/16/20	Fri 3/27/20						
202		Mid-Block Passage Elevation	10 days	Mon 3/16/20	Fri 3/27/20						
203		Plaster	45 days	Mon 3/30/20	Mon 6/1/20						
204		Davis Elevation	15 days	Mon 3/30/20	Fri 4/17/20						
205		Plaster Lath & Trim	10 days	Mon 3/30/20	Fri 4/10/20						
206		Plaster Scratch, Brown & Finish	5 days	Mon 4/13/20	Fri 4/17/20						
207		North Elevation	15 days	Mon 4/13/20	Fri 5/1/20						
208		Plaster Lath & Trim	10 days	Mon 4/13/20	Fri 4/24/20						
209		Plaster Scratch, Brown & Finish	5 days	Mon 4/27/20	Fri 5/1/20						
210		South Elevation	15 days	Mon 4/27/20	Fri 5/15/20						
211		Plaster Lath & Trim	10 days	Mon 4/27/20	Fri 5/8/20						
212		Plaster Scratch, Brown & Finish	5 days	Mon 5/11/20	Fri 5/15/20						
213		Mid-Block Passage Elevation	15 days	Mon 5/11/20	Mon 6/1/20						
214		Plaster Lath & Trim	10 days	Mon 5/11/20	Fri 5/22/20						
215		Plaster Scratch, Brown & Finish	5 days	Tue 5/26/20	Mon 6/1/20						
216		Exterior Finishes	55 days	Mon 4/20/20	Tue 7/7/20						
217		Davis Elevation	30 days	Mon 4/20/20	Mon 6/1/20						
218		Fiber Cement Panels	5 days	Mon 4/20/20	Fri 4/24/20						
219		Thin Set Tile	5 days	Mon 4/27/20	Fri 5/1/20						
220		Paint & Sealants	5 days	Mon 5/4/20	Fri 5/8/20						
221		Clean Windows	5 days	Mon 5/11/20	Fri 5/15/20						
222		Punch	10 days	Mon 5/18/20	Mon 6/1/20						
223		North Elevation	30 days	Mon 5/4/20	Mon 6/15/20						
224		Fiber Cement Panels	5 days	Mon 5/4/20	Fri 5/8/20						
225		Thin Set Tile	5 days	Mon 5/11/20	Fri 5/15/20						
226		Paint & Sealants	5 days	Mon 5/18/20	Fri 5/22/20						
227		Clean Windows	5 days	Tue 5/26/20	Mon 6/1/20						
228		Punch	10 days	Tue 6/2/20	Mon 6/15/20						
229		South Elevation	30 days	Mon 5/11/20	Mon 6/22/20						
230		Fiber Cement Panels	5 days	Mon 5/11/20	Fri 5/15/20						
231		Thin Set Tile	5 days	Mon 5/18/20	Fri 5/22/20						
232		Paint & Sealants	5 days	Tue 5/26/20	Mon 6/1/20						
233		Clean Windows	5 days	Tue 6/2/20	Mon 6/8/20						
234		Punch	10 days	Tue 6/9/20	Mon 6/22/20						
235		Mid-Block Passage Elevation	30 days	Tue 5/26/20	Tue 7/7/20						
236		Fiber Cement Panels	5 days	Tue 5/26/20	Mon 6/1/20						
237		Thin Set Tile	5 days	Tue 6/2/20	Mon 6/8/20						
238		Paint & Sealants	5 days	Tue 6/9/20	Mon 6/15/20						
239		Clean Windows	5 days	Tue 6/16/20	Mon 6/22/20						
240		Punch	10 days	Tue 6/23/20	Tue 7/7/20						

Project: 735 Davis GMP Schedu
Date: Mon 4/8/19

Task	Project Summary	Manual Task	Start-only	Deadline	↓
Split	Inactive Task	Duration-only	Finish-only	Progress	
Milestone	Inactive Milestone	Manual Summary Rollup	External Tasks	Manual Progress	
Summary	Inactive Summary	Manual Summary	External Milestone		

735 Davis Schedule

ID	Task Mode	Task Name	Duration	Start	Finish	1st Half Qtr 1	Qtr 2	2nd Half Qtr 3	Qtr 4	1st Half Qtr 1	Qtr 2
241											
242		Interior	200 days	Thu 11/7/19	Mon 8/24/20						
243		Level 1	183 days	Wed 12/4/19	Mon 8/24/20						
244		Layout / Install Top Track	5 days	Wed 12/4/19	Tue 12/10/19						
245		Metal Stud Framing	10 days	Wed 12/11/19	Tue 12/24/19						
246		MEPS Rough	25 days	Fri 5/8/20	Fri 6/12/20						
247		Drywall	20 days	Mon 6/15/20	Mon 7/13/20						
248		Finishes	30 days	Tue 7/14/20	Mon 8/24/20						
249		Level 2	60 days	Thu 11/7/19	Wed 2/5/20						
250		MEPS Rough	25 days	Thu 11/7/19	Fri 12/13/19						
251		Drywall	20 days	Mon 12/2/19	Mon 12/30/19						
252		Finishes	25 days	Tue 12/31/19	Wed 2/5/20						
253		Level 3	60 days	Mon 12/16/19	Thu 3/12/20						
254		MEPS Rough	25 days	Mon 12/16/19	Wed 1/22/20						
255		Drywall	20 days	Wed 1/8/20	Wed 2/5/20						
256		Finishes	25 days	Thu 2/6/20	Thu 3/12/20						
257		Level 4	60 days	Thu 1/23/20	Thu 4/16/20						
258		MEPS Rough	25 days	Thu 1/23/20	Thu 2/27/20						
259		Drywall	20 days	Thu 2/13/20	Thu 3/12/20						
260		Finishes	25 days	Fri 3/13/20	Thu 4/16/20						
261		Level 5	60 days	Fri 2/28/20	Thu 5/21/20						
262		MEPS Rough	25 days	Fri 2/28/20	Thu 4/2/20						
263		Drywall	20 days	Fri 3/20/20	Thu 4/16/20						
264		Finishes	25 days	Fri 4/17/20	Thu 5/21/20						
265		Level 6	60 days	Fri 4/3/20	Fri 6/26/20						
266		MEPS Rough	25 days	Fri 4/3/20	Thu 5/7/20						
267		Drywall	20 days	Fri 4/24/20	Thu 5/21/20						
268		Finishes	25 days	Fri 5/22/20	Fri 6/26/20						
269											
270		Elevators	164 days	Fri 1/31/20	Tue 9/22/20						
271		Hoistway, Embeds, Guiderails	15 days	Fri 1/31/20	Fri 2/21/20						
272		Penthouse Roofing	5 days	Fri 2/7/20	Thu 2/13/20						
273		Install Elevator	50 days	Mon 2/24/20	Fri 5/1/20						
274		State Inspection - Temp Elevator Use	5 days	Mon 5/4/20	Fri 5/8/20						
275		Complete Elevator - State Inspection	20 days	Tue 8/25/20	Tue 9/22/20						
276											
277		Site & Civil Work	50 days	Wed 7/22/20	Wed 9/30/20						
278		Ground Level	25 days	Wed 7/22/20	Tue 8/25/20						
279		Municipal Work, Streetscape	25 days	Wed 8/26/20	Wed 9/30/20						
280											

Project: 735 Davis GMP Schedu Date: Mon 4/8/19	Task	Project Summary	Manual Task	Start-only	Deadline	↓
	Split	Inactive Task	Duration-only	Finish-only	Progress	Progress
	Milestone	Inactive Milestone	Manual Summary Rollup	External Tasks	Manual Progress	Manual Progress
	Summary	Inactive Summary	Manual Summary	External Milestone	Manual Progress	

735 Davis Schedule

ID	Task Mode	Task Name	Duration	Start	Finish	1st Half		2nd Half		1st Half	
						Qtr 1	Qtr 2	Qtr 3	Qtr 4	Qtr 1	Qtr 2
281		Inspections/Testing/Commissioning	44 days	Tue 8/25/20	Mon 10/26/20						
282		Life Safety Testing, Commissioning	15 days	Tue 8/25/20	Tue 9/15/20						
283		City Inspections	15 days	Wed 9/16/20	Tue 10/6/20						
284		Rain Days	13 days	Wed 10/7/20	Fri 10/23/20						
285		TCO	1 day	Mon 10/26/20	Mon 10/26/20						

Project: 735 Davis GMP Schedu
Date: Mon 4/8/19

Task		Project Summary		Manual Task		Start-only		Deadline	
Split		Inactive Task		Duration-only		Finish-only		Progress	
Milestone		Inactive Milestone		Manual Summary Rollup		External Tasks		Manual Progress	
Summary		Inactive Summary		Manual Summary		External Milestone			