



SFMTA

Sansome and Battery Connections Project



Barbary Coast Neighborhood Association
Community Meeting – March 6, 2018

Project map



What will the project do?

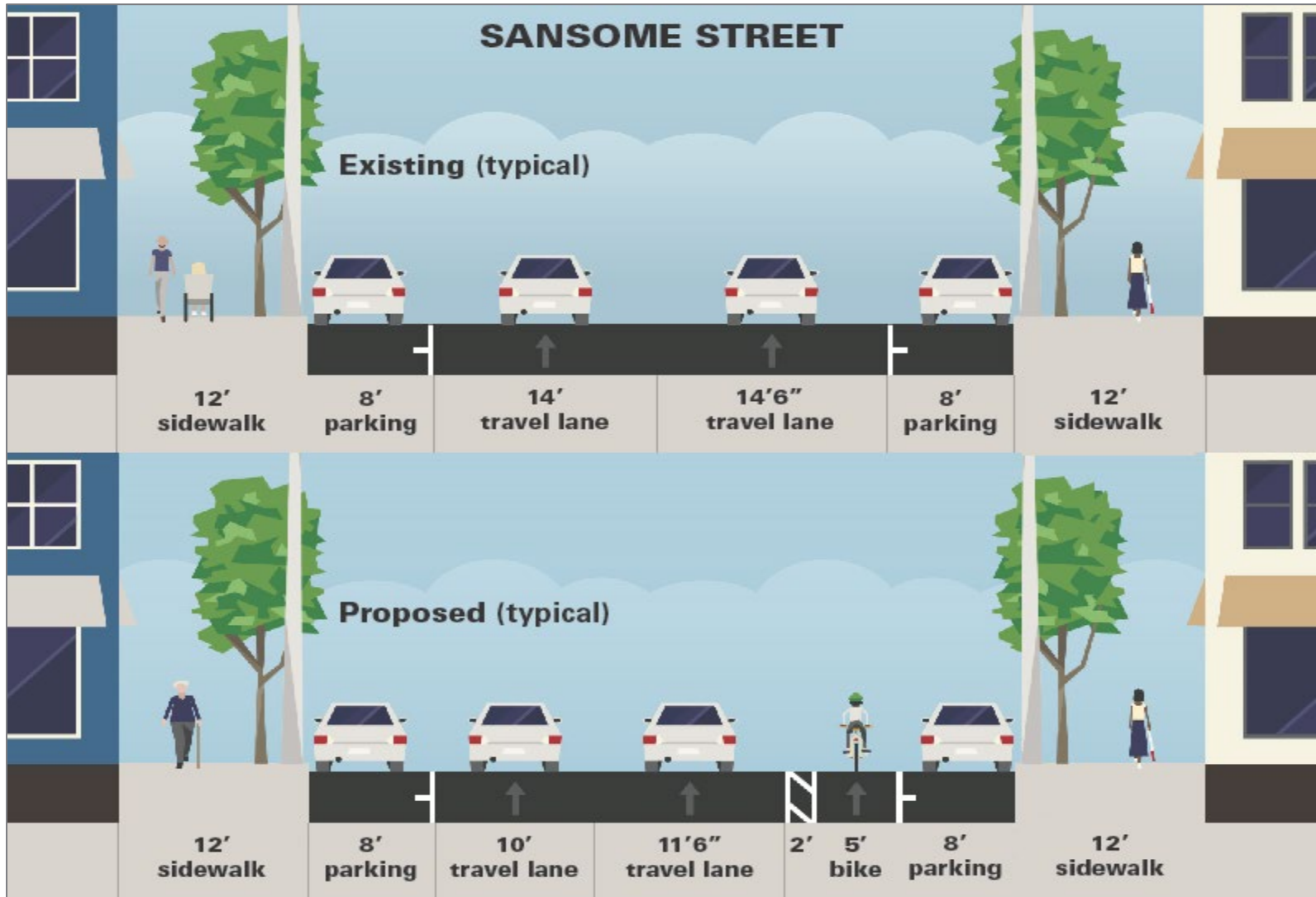
- **Enhance pedestrian access and safety** by updating intersections with high-visibility crosswalks, shorter crossing distances, and better sight lines
- **Provide a new bike route** between the Northern Waterfront and edge of the Financial District, connecting neighborhood destinations
- **Improve safety at Embarc/Sansome/Chestnut**, including a new crosswalk with sidewalk extension and measures to reduce conflicts b/w bikes and vehicles
- **Calm traffic at the entry of Battery Street** with a safer crosswalk at Greenwich Street, new protected bikeway, and traffic islands



Sansome Street - today



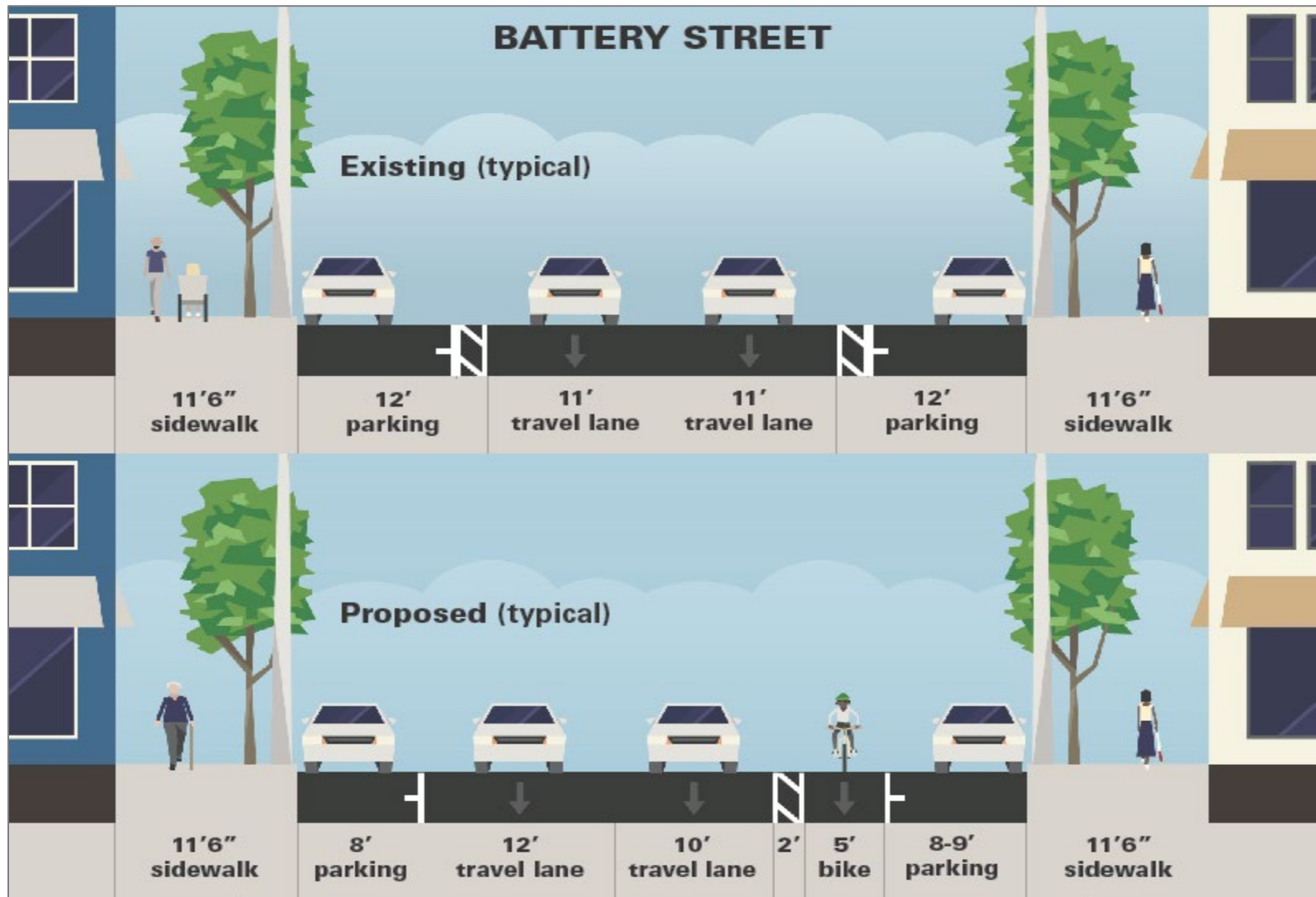
Sansome Street



Battery Street - today



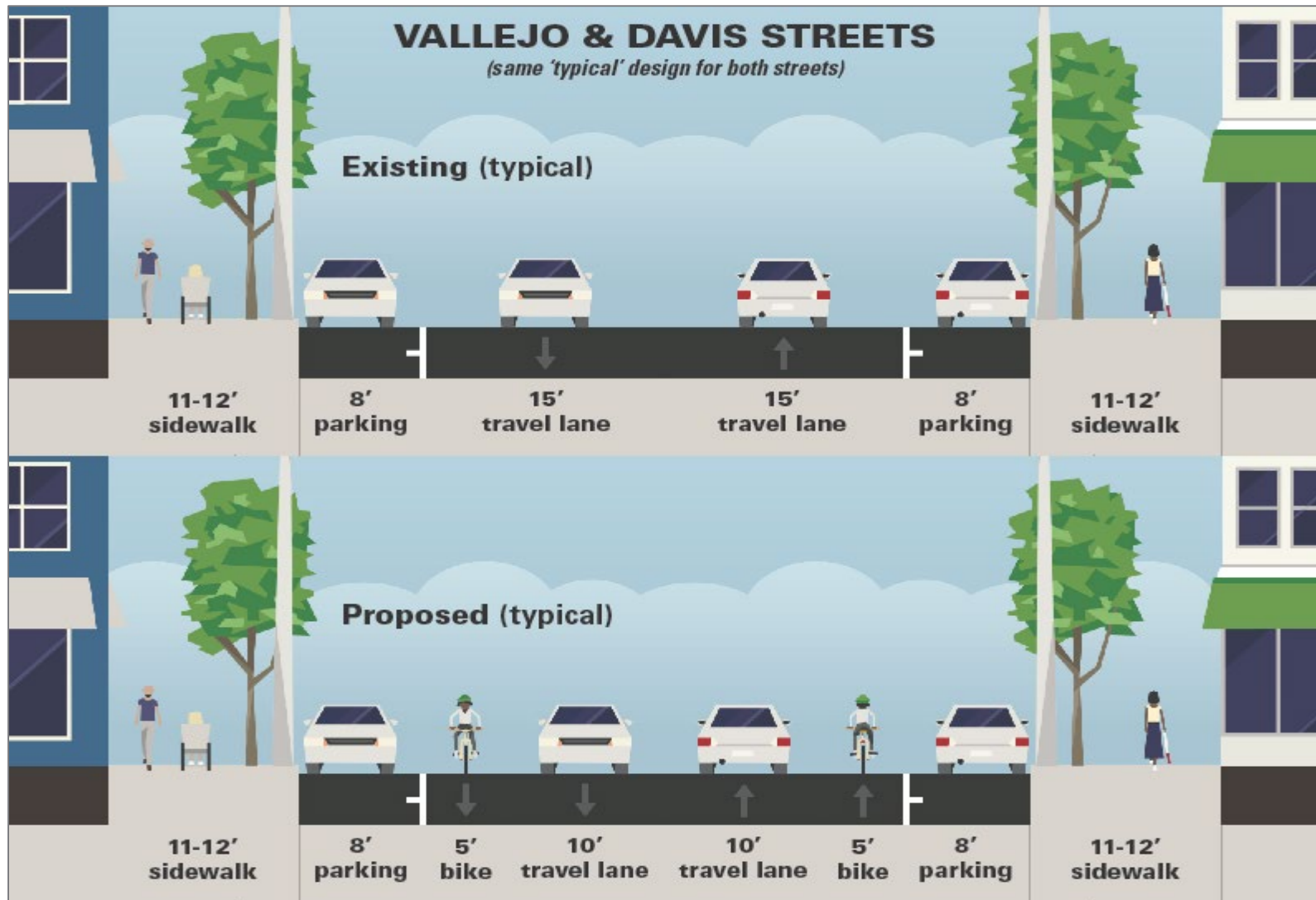
Battery Street



Vallejo and Davis streets - today



Vallejo and Davis streets



Walking tour on Feb 21st

Thank you to the 60+ people who attended!



Public engagement

- **Project introduced at Embarcadero Enhancement Project Design Showcase** – October 2018
- **Project mailer and walking tour** – February 21st
- **Briefings with stakeholders** (e.g. Bay Club, Fog City Diner)
- **Door-to-door outreach to businesses and offices**
- **Barbary Coast community meeting** – tonight, March 6th
- **Telegraph Landing community meeting** – tomorrow, March 7th

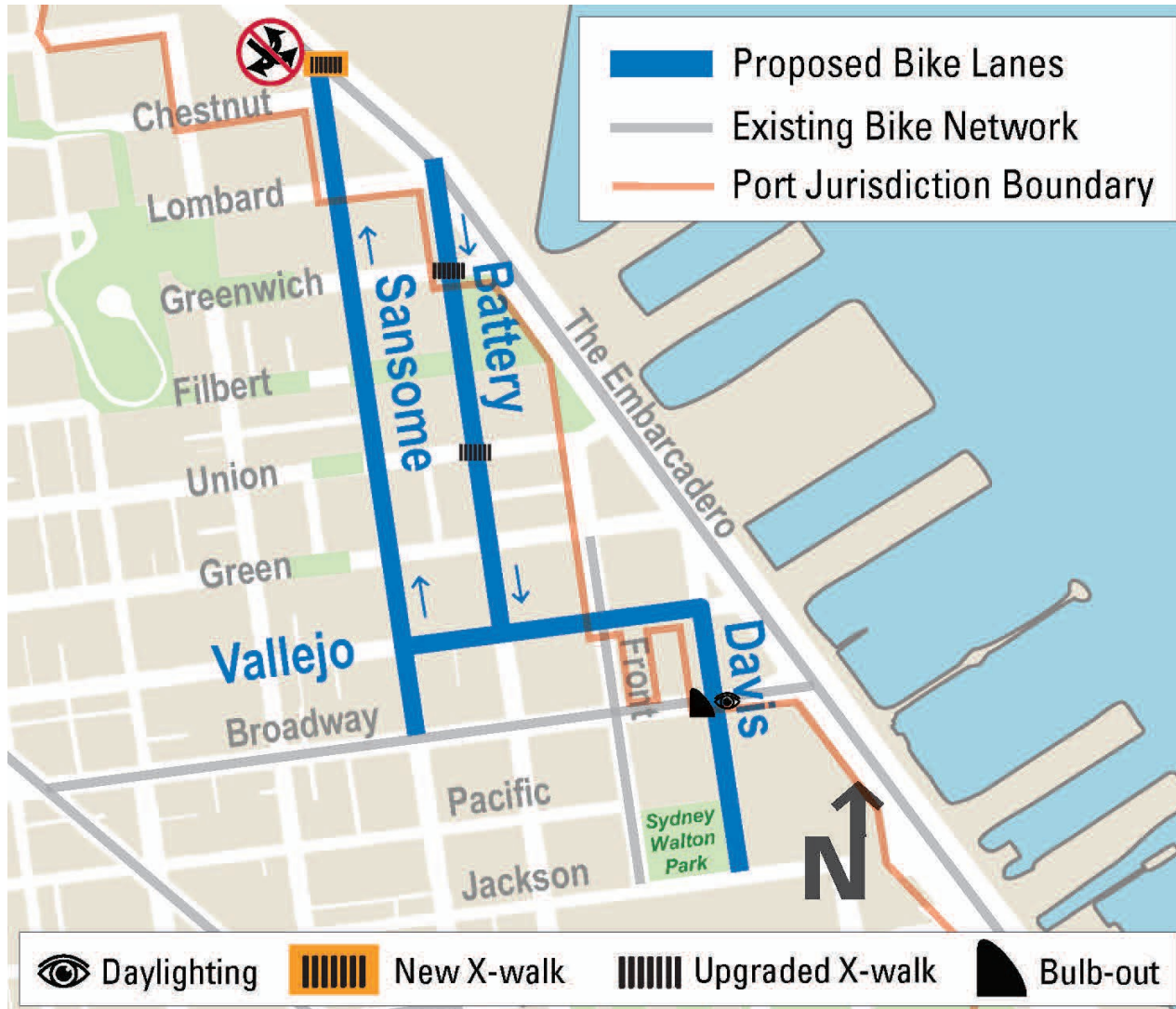
sfmta.com/sansomebattery

Updated project proposal

What we heard	Updated project proposal
Restricting westbound traffic on Vallejo Street at Battery St requires further study	Traffic on Vallejo Street will remain two-way between Battery Street and Cowell Place
Residential access from the Embarcadero onto Chestnut Street is important	Left-turns and U-turns will be maintained from northbound Embarcadero at Chestnut Street
Explore improvements to enhance pedestrian safety and comfort at the Pacific Avenue mid-block crossing on Davis Street	Study/introduce traffic calming on Davis Street between Broadway and Jackson Street; enhance crosswalk visibility

No change to Battery/Embarcadero proposal

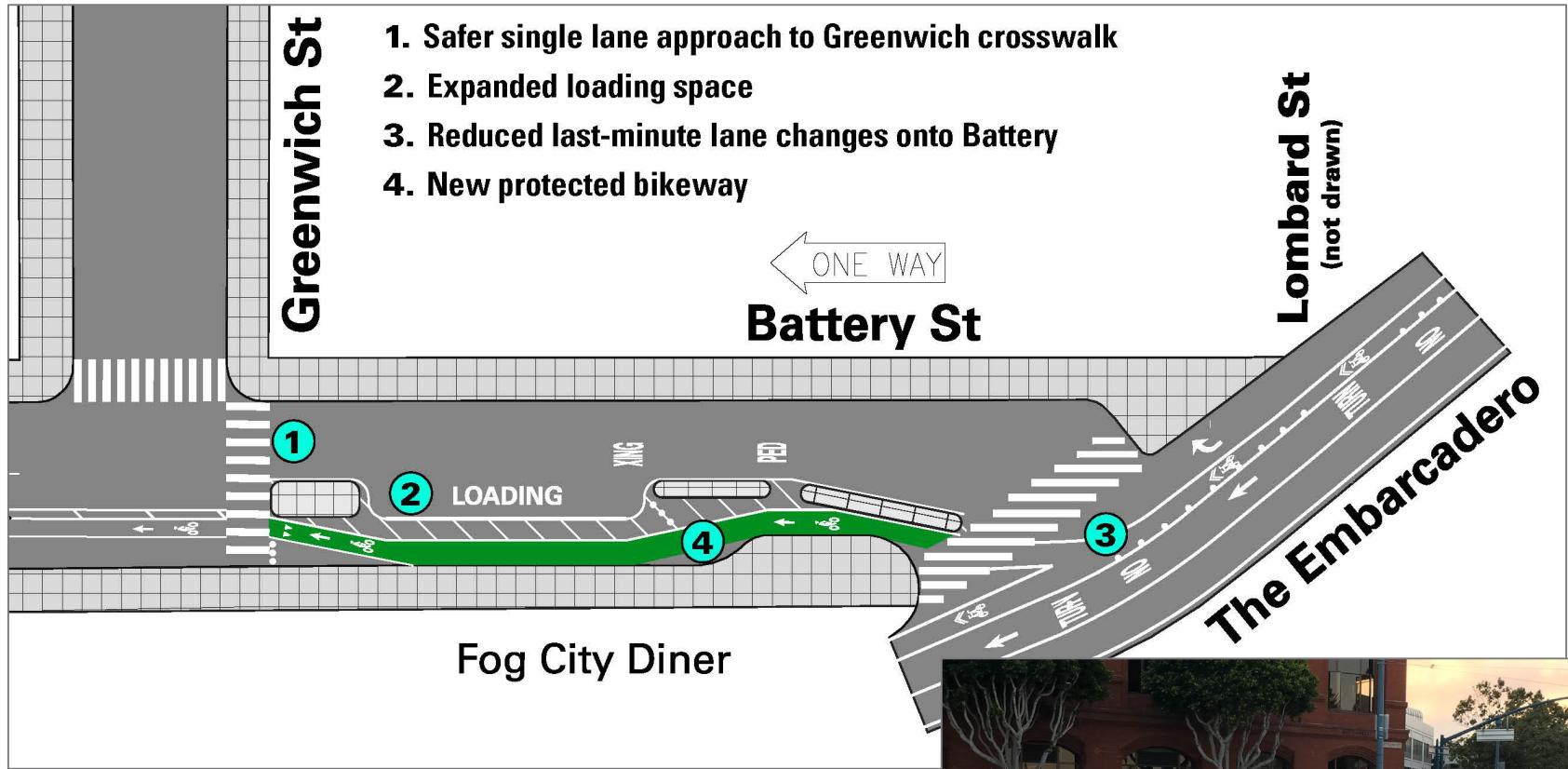
Updated project proposal



Battery St @ the Embarcadero



Battery St @ the Embarcadero



Sansome St @ Embarc/Chestnut

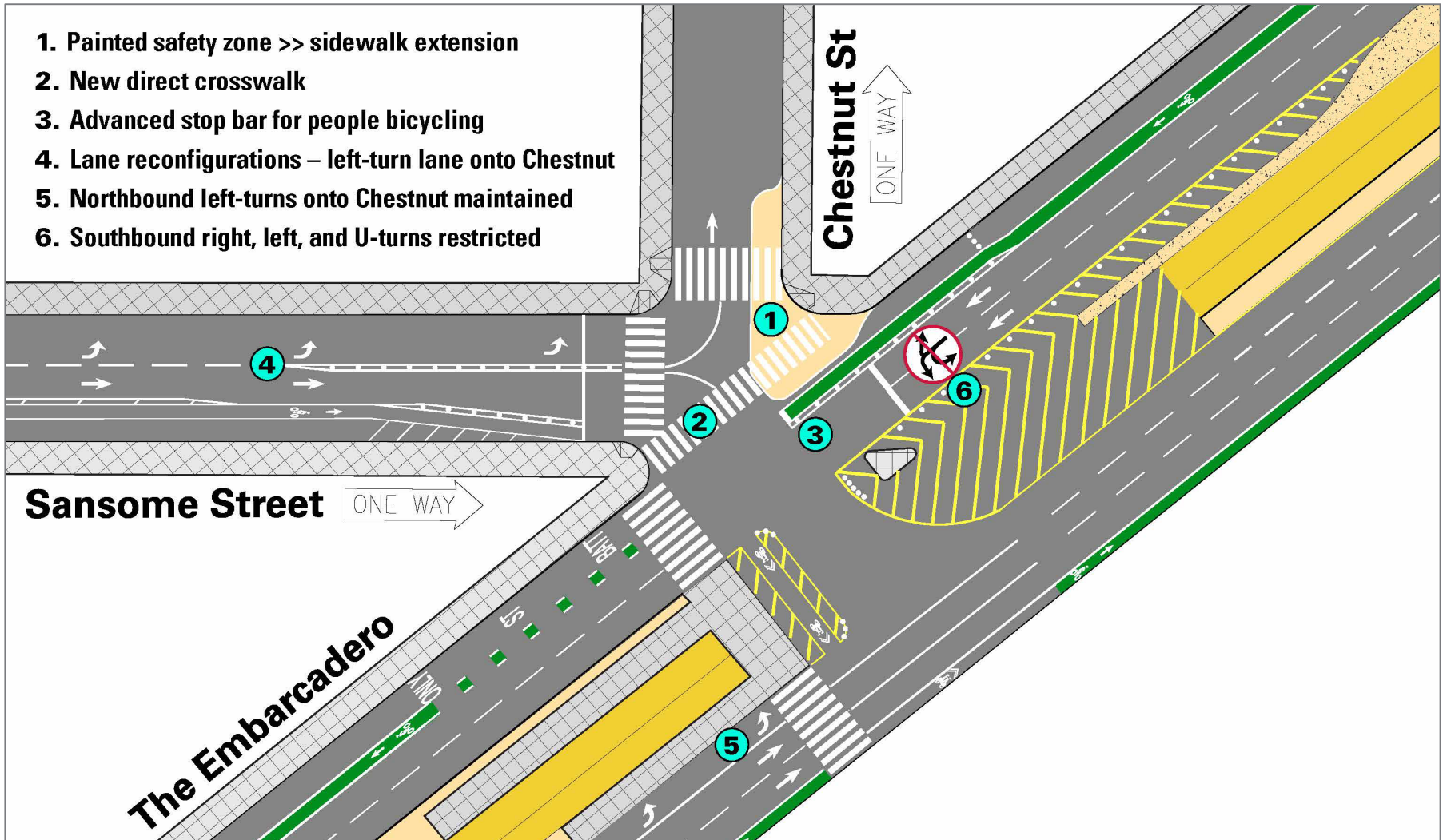


Sansome St @ Embarc/Chestnut



Sansome St @ Embarc/Chestnut

1. Painted safety zone >> sidewalk extension
2. New direct crosswalk
3. Advanced stop bar for people bicycling
4. Lane reconfigurations – left-turn lane onto Chestnut
5. Northbound left-turns onto Chestnut maintained
6. Southbound right, left, and U-turns restricted



Timeline

- **SFMTA Board of Directors – April 16th @ 1pm** (City Hall, Rm. 400)
- Blocks under jurisdiction of the **Port of San Francisco** will receive separate approvals



Embarcadero Enhancement Project



The Embarcadero Enhancement Project will improve safety, comfort, and accessibility for all users by creating a 'Complete Street' from North Point to Townsend streets (in phases).

Project Goals / Elements

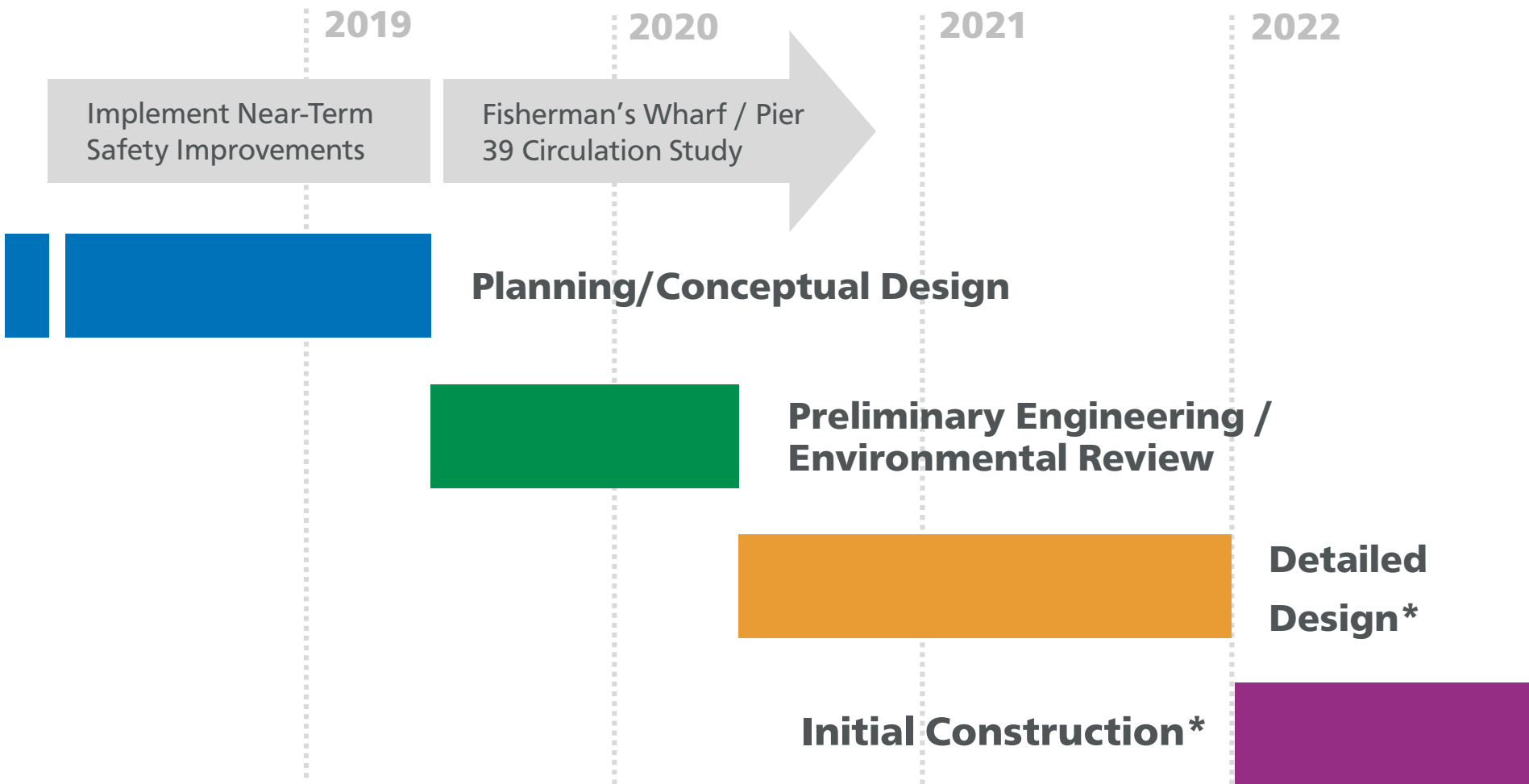
- **Protected Bikeway:** two-way on water-side
- **Updated Promenade:** more organization and clarity of space
- **Pedestrian Crossings:** shorter, more accessible
- **Efficient Intersections:** better signal timing, consolidated turn movements
- **Improved Loading:** curbside management
- **Enhanced Streetcar:** access & signal priority
- **Urban design opportunities**



Embarcadero @ Folsom - potential



Embarcadero Enhancement timeline



** Tentative timeline for initial phase only; funding not yet identified*

Key motivations

The Embarcadero Enhancement Project timeline is long.

There is ample room for bike lanes on these streets.

Trade-offs are few.

We are able to make real improvements quickly.

Thank you! Questions?

Mark Dreger

Battery/Sansome Project Manager

Mark.Dreger@sfmta.com

sfmta.com/sansomebattery

Casey Hildreth

Embarcadero Enhancement Project Manager

Casey.hildreth@sfmta.com

sfmta.com/embarcadero